

Product datasheet for **AP54417PU-N**

TUBB4Q (TUBB7P) (N-term) Rabbit Polyclonal Antibody

Product data:

Product Type:	Primary Antibodies
Applications:	WB
Recommended Dilution:	ELISA: 1:1;000. Western blot: 1:100~500.
Reactivity:	Human
Host:	Rabbit
Isotype:	Ig
Clonality:	Polyclonal
Immunogen:	KLH conjugated synthetic peptide between 63-93 amino acids from the N-terminal region of human TUBB4Q
Specificity:	This antibody detects TUBB4Q / TUB4Q (N-term).
Formulation:	PBS with 0.09% (W/V) sodium azide State: Aff - Purified State: Liquid Ig fraction
Concentration:	lot specific
Purification:	Protein A column followed by peptide affinity purification
Conjugation:	Unconjugated
Storage:	Store at 2 - 8 °C for up to six months or (in aliquots) at -20 °C for longer. Avoid repeated freezing and thawing.
Stability:	Shelf life: one year from despatch.
Gene Name:	tubulin beta 7 pseudogene
Database Link:	Entrez Gene 56604 Human Q99867
Background:	Tubulin is the major constituent of microtubules. It binds two moles of GTP, one at an exchangeable site on the beta chain and one at a non-exchangeable site on the alpha-chain (By similarity).
Synonyms:	Putative tubulin beta-4q chain, Beta-tubulin 4Q



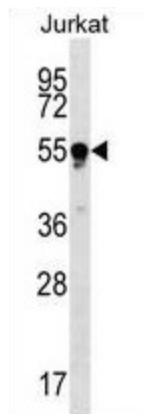
[View online »](#)

Note: **Molecular Weight:** 48435 Da

Protein Families: Druggable Genome

Protein Pathways: Gap junction, Pathogenic Escherichia coli infection

Product images:



TUBB4Q Antibody (N-term) western blot analysis in Jurkat cell line lysates (35 ug/lane). This demonstrates the TUBB4Q antibody detected the TUBB4Q protein (arrow).