

## Product datasheet for **AP54414PU-N**

### **TUBA6 (TUBA1C) (C-term) Rabbit Polyclonal Antibody**

#### **Product data:**

<b>Product Type:</b>	Primary Antibodies
<b>Applications:</b>	IHC, WB
<b>Recommended Dilution:</b>	ELISA: 1:1;000. Western blot: 1:1000. Immunohistochemistry on paraffin sections: 1:10~50.
<b>Reactivity:</b>	Human
<b>Host:</b>	Rabbit
<b>Isotype:</b>	Ig
<b>Clonality:</b>	Polyclonal
<b>Immunogen:</b>	KLH conjugated synthetic peptide between 414-441 amino acids from the C-terminal region of human TUBA1C
<b>Specificity:</b>	This antibody detects alpha Tubulin / TUBA1C / TUBA6 (C-term).
<b>Formulation:</b>	PBS with 0.09% (W/V) sodium azide State: Aff - Purified State: Liquid Ig fraction
<b>Concentration:</b>	lot specific
<b>Purification:</b>	Protein A column followed by peptide affinity purification
<b>Conjugation:</b>	Unconjugated
<b>Storage:</b>	Store at 2 - 8 °C for up to six months or (in aliquots) at -20 °C for longer. Avoid repeated freezing and thawing.
<b>Stability:</b>	Shelf life: one year from despatch.
<b>Gene Name:</b>	tubulin alpha 1c
<b>Database Link:</b>	<a href="#">Entrez Gene 84790 Human Q9BQE3</a>
<b>Background:</b>	Tubulin is the major constituent of microtubules. It binds two moles of GTP, one at an exchangeable site on the beta chain and one at a non-exchangeable site on the alpha-chain.
<b>Synonyms:</b>	Tubulin alpha-1C chain, Tubulin alpha-6 chain, Alpha-tubulin 6

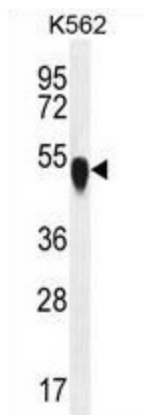


[View online »](#)

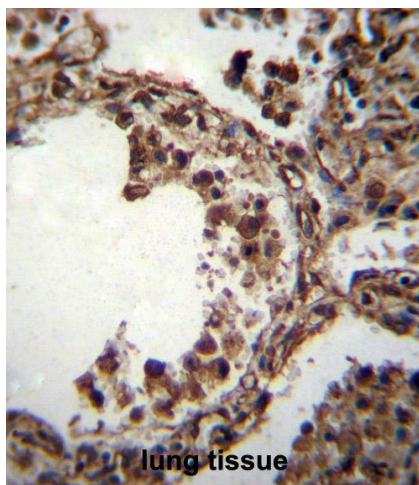
Note: **Molecular Weight:** 49895 Da

Protein Pathways: Gap junction, Pathogenic Escherichia coli infection

**Product images:**



TUBA1C Antibody (C-term) western blot analysis in K562 cell line lysates (35 ug/lane). This demonstrates the TUBA1C antibody detected the TUBA1C protein (arrow).



TUBA1C Antibody (C-term) immunohistochemistry analysis in formalin fixed and paraffin embedded human lung tissue followed by peroxidase conjugation of the secondary antibody and DAB staining. This data demonstrates the use of TUBA1C Antibody (C-term) for immunohistochemistry. Clinical relevance has not been evaluated.