

Product datasheet for **AP54411PU-N**

TTL8 (N-term) Rabbit Polyclonal Antibody

Product data:

Product Type:	Primary Antibodies
Applications:	WB
Recommended Dilution:	ELISA: 1:1;000. Western blot: 1:100~500.
Reactivity:	Human
Host:	Rabbit
Isotype:	Ig
Clonality:	Polyclonal
Immunogen:	KLH conjugated synthetic peptide between 37-67 amino acids from the N-terminal region of human TTL8
Specificity:	This antibody detects TTL8 (N-term).
Formulation:	PBS with 0.09% (W/V) sodium azide State: Aff - Purified State: Liquid Ig fraction
Concentration:	lot specific
Purification:	Protein A column followed by peptide affinity purification
Conjugation:	Unconjugated
Storage:	Store at 2 - 8 °C for up to six months or (in aliquots) at -20 °C for longer. Avoid repeated freezing and thawing.
Stability:	Shelf life: one year from despatch.
Gene Name:	tubulin tyrosine ligase like 8
Database Link:	Entrez Gene 164714 Human A6PVC2



[View online »](#)

Background:

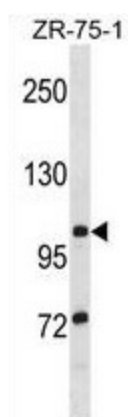
Monoglycylase which modifies both tubulin and non-tubulin proteins, generating side chains of glycine on the gamma-carboxyl groups of specific glutamate residues of target proteins. Monoglycylates tubulin, with a preference for alpha-tubulin toward beta-tubulin. Has the ability to modify non-tubulin proteins such as ANP32A, ANP32B, SET and NCL. Involved in the side-chain initiation step of the glycylation reaction by adding a single glycine chain to generate monoglycine side chains. Not involved in elongation step of the polyglycylation reaction (By similarity).

Synonyms:

Protein monoglycylase

Note:

Molecular Weight: 90756 Da

Product images:

TTLL8 Antibody (N-term) western blot analysis in ZR-75-1 cell line lysates (35 ug/lane). This demonstrates the TTLL8 antibody detected the TTLL8 protein (arrow).