

Product datasheet for **AP54409PU-N**

TTLL13P (Center) Rabbit Polyclonal Antibody

Product data:

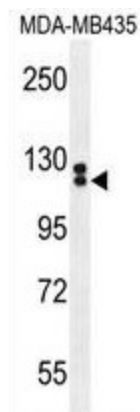
Product Type:	Primary Antibodies
Applications:	FC, WB
Recommended Dilution:	ELISA: 1:1;000. Western blot: 1:100~500. Flow cytometry: 1:10~50.
Reactivity:	Human
Host:	Rabbit
Isotype:	Ig
Clonality:	Polyclonal
Immunogen:	KLH conjugated synthetic peptide between 468-498 amino acids from the Central region of human TTLL13
Specificity:	This antibody detects TTLL13 (Center).
Formulation:	PBS with 0.09% (W/V) sodium azide State: Aff - Purified State: Liquid Ig fraction
Concentration:	lot specific
Purification:	Protein A column followed by peptide affinity purification
Conjugation:	Unconjugated
Storage:	Store at 2 - 8 °C for up to six months or (in aliquots) at -20 °C for longer. Avoid repeated freezing and thawing.
Stability:	Shelf life: one year from despatch.
Gene Name:	Homo sapiens tubulin tyrosine ligase-like family, member 13 (TTLL13)
Database Link:	Entrez Gene 440307 Human A6NNM8
Background:	Polyglutamylase which preferentially modifies alpha-tubulin. Involved in the side-chain elongation step of the polyglutamylation reaction rather than in the initiation step (By similarity).
Synonyms:	Tubulin polyglutamylase TTLL13P



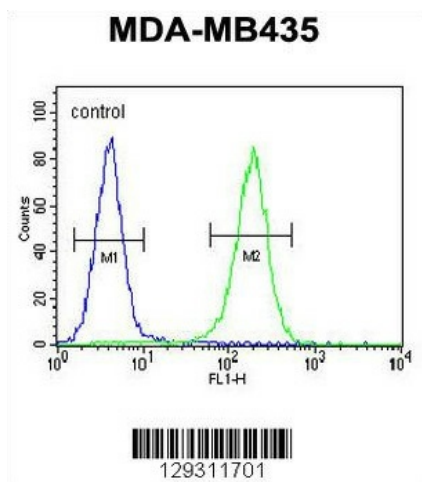
[View online »](#)

Note: **Molecular Weight:** 93645 Da

Product images:



TTLL13 Antibody (Center) western blot analysis in MDA-MB435 cell line lysates (35 ug/lane). This demonstrates the TTLL13 antibody detected the TTLL13 protein (arrow).



TTLL13 Antibody (Center) flow cytometric analysis of MDA-MB435 cells (right histogram) compared to a negative control cell (left histogram). FITC-conjugated goat-anti-rabbit secondary antibodies were used for the analysis.