

Product datasheet for **AP54406PU-N**

TTL (C-term) Rabbit Polyclonal Antibody

Product data:

Product Type:	Primary Antibodies
Applications:	WB
Recommended Dilution:	ELISA: 1:1;000. Western blot: 1:100~500.
Reactivity:	Human
Host:	Rabbit
Isotype:	Ig
Clonality:	Polyclonal
Immunogen:	KLH conjugated synthetic peptide between 355-385 amino acids from the C-terminal region of human TTL
Specificity:	This antibody detects TTL (C-term).
Formulation:	PBS with 0.09% (W/V) sodium azide State: Aff - Purified State: Liquid Ig fraction
Concentration:	lot specific
Purification:	Protein A column followed by peptide affinity purification
Conjugation:	Unconjugated
Storage:	Store at 2 - 8 °C for up to six months or (in aliquots) at -20 °C for longer. Avoid repeated freezing and thawing.
Stability:	Shelf life: one year from despatch.
Gene Name:	tubulin tyrosine ligase
Database Link:	Entrez Gene 150465 Human Q8NG68
Background:	TTL is a cytosolic enzyme involved in the posttranslational modification of alpha-tubulin (see MIM 602529). Alpha-tubulin within assembled microtubules is detyrosinated over time at the C terminus. After microtubule disassembly, TTL restores the tyrosine residues and consequently participates in a cycle of tubulin detyrosination and tyrosination (Erck et al., 2003 [PubMed 14571137]).

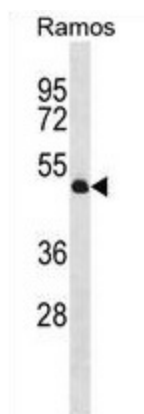


[View online »](#)

Synonyms: Tubulin-tyrosine ligase, Tubulin tyrosine ligase

Note: **Molecular Weight:** 43212 Da

Product images:



TTL Antibody (C-term) western blot analysis in Ramos cell line lysates (35 ug/lane). This demonstrates the TTL antibody detected the TTL protein (arrow).