

## Product datasheet for **AP54402PU-N**

### TTC8 (N-term) Rabbit Polyclonal Antibody

#### Product data:

Product Type:	Primary Antibodies
Applications:	WB
Recommended Dilution:	ELISA: :1;000. Western blot: 1:100~500.
Reactivity:	Human
Host:	Rabbit
Isotype:	Ig
Clonality:	Polyclonal
Immunogen:	KLH conjugated synthetic peptide between 17-46 amino acids from the N-terminal region of human TTC8
Specificity:	This antibody detects TTC8 / BBS8 (N-term).
Formulation:	PBS with 0.09% (W/V) sodium azide State: Aff - Purified State: Liquid Ig fraction
Concentration:	lot specific
Purification:	Protein A column followed by peptide affinity purification
Conjugation:	Unconjugated
Storage:	Store at 2 - 8 °C for up to six months or (in aliquots) at -20 °C for longer. Avoid repeated freezing and thawing.
Stability:	Shelf life: one year from despatch.
Gene Name:	tetratricopeptide repeat domain 8
Database Link:	<a href="#">Entrez Gene 123016 Human Q8TAM2</a>
Background:	This gene encodes a protein that has been directly linked to Bardet-Biedl syndrome. The primary features of this syndrome include retinal dystrophy, obesity, polydactyly, renal abnormalities and learning disabilities. Experimentation in non-human eukaryotes suggests that this gene is expressed in ciliated cells and that it is involved in the formation of cilia. Alternate transcriptional splice variants have been characterized.

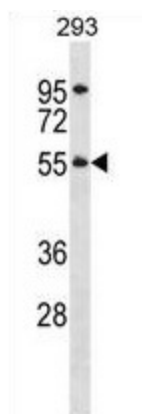


[View online »](#)

**Synonyms:** TPR repeat protein 8, Bardet-Biedl syndrome 8 protein

**Note:** **Molecular Weight:** 55kd Isoform 3. 61534 Da

**Product images:**



TTC8 Antibody (N-term) western blot analysis in 293 cell line lysates (35 ug/lane). This demonstrates the TTC8 antibody detected the TTC8 protein (arrow).