

## Product datasheet for **AP54395PU-N**

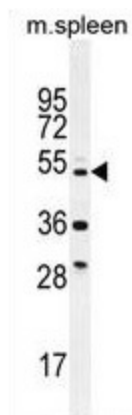
### **TTC23L (C-term) Rabbit Polyclonal Antibody**

#### **Product data:**

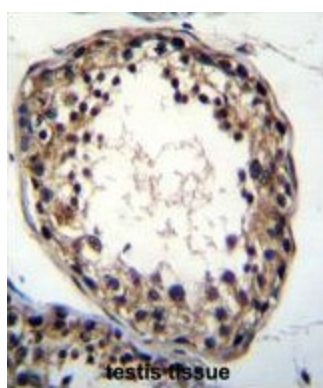
Product Type:	Primary Antibodies
Applications:	IHC, WB
Recommended Dilution:	ELISA: 1:1;000. Western blot: 1:100~500. Immunohistochemistry on paraffin sections: 1:10~50.
Reactivity:	Human, Mouse
Host:	Rabbit
Isotype:	Ig
Clonality:	Polyclonal
Immunogen:	KLH conjugated synthetic peptide between 326-357 amino acids from the C-terminal region of human TTC23L
Specificity:	This antibody detects TTC23L (C-term).
Formulation:	PBS with 0.09% (W/V) sodium azide State: Aff - Purified State: Liquid Ig fraction
Concentration:	lot specific
Purification:	Protein A column; followed by peptide affinity purification
Conjugation:	Unconjugated
Storage:	Store at 2 - 8 °C for up to six months or (in aliquots) at -20 °C for longer. Avoid repeated freezing and thawing.
Stability:	Shelf life: one year from despatch.
Gene Name:	tetratricopeptide repeat domain 23 like
Database Link:	<a href="#">Entrez Gene 153657 Human</a> <a href="#">Q6PF05</a>
Synonyms:	FLJ25439
Note:	<b>Molecular Weight:</b> 40837 Da



[View online »](#)

**Product images:**

TTC23L Antibody (C-term) western blot analysis in mouse spleen tissue lysates (35 ug/lane). This demonstrates the TTC23L antibody detected the TTC23L protein (arrow).



TTC23L Antibody (C-term) immunohistochemistry analysis in formalin fixed and paraffin embedded human testis tissue followed by peroxidase conjugation of the secondary antibody and DAB staining. This data demonstrates the use of TTC23L Antibody (C-term) for immunohistochemistry. Clinical relevance has not been evaluated.