

## Product datasheet for **AP54393PU-N**

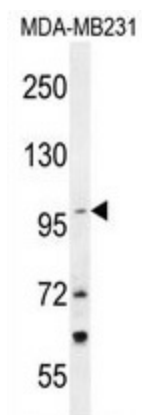
### TTC16 (N-term) Rabbit Polyclonal Antibody

#### Product data:

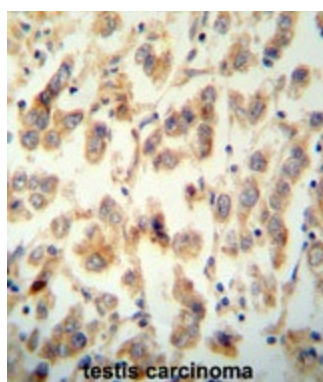
Product Type:	Primary Antibodies
Applications:	IHC, WB
Recommended Dilution:	ELISA: 1:1;000. Western blot: 1:100~500. Immunohistochemistry on paraffin sections: 1:50~100.
Reactivity:	Human
Host:	Rabbit
Isotype:	Ig
Clonality:	Polyclonal
Immunogen:	KLH conjugated synthetic peptide between 1-30 amino acids from the N-terminal region of human TTC16
Specificity:	This antibody detects TTC16 (N-term).
Formulation:	PBS with 0.09% (W/V) sodium azide State: Aff - Purified State: Liquid Ig fraction
Concentration:	lot specific
Purification:	Protein A column followed by peptide affinity purification
Conjugation:	Unconjugated
Storage:	Store at 2 - 8 °C for up to six months or (in aliquots) at -20 °C for longer. Avoid repeated freezing and thawing.
Stability:	Shelf life: one year from despatch.
Gene Name:	tetratricopeptide repeat domain 16
Database Link:	<a href="#">Entrez Gene 158248 Human Q8NEE8</a>
Background:	TTC16 contains 8 TPR repeats. The exact function of TTC16 remains unknown.
Synonyms:	FLJ32780
Note:	<b>Molecular Weight:</b> 98309 Da



[View online »](#)

**Product images:**

TTC16 Antibody (N-term) western blot analysis in MDA-MB231 cell line lysates (35 ug/lane). This demonstrates the TTC16 antibody detected the TTC16 protein (arrow).



TTC16 antibody (N-term) immunohistochemistry analysis in formalin fixed and paraffin embedded human testis carcinoma followed by peroxidase conjugation of the secondary antibody and DAB staining. This data demonstrates the use of the TTC16 antibody (N-term) for immunohistochemistry. Clinical relevance has not been evaluated.