

Product datasheet for **AP54386PU-N**

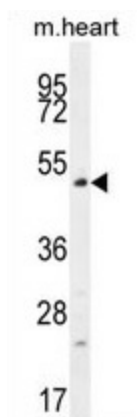
TSPYL4 (C-term) Rabbit Polyclonal Antibody

Product data:

Product Type:	Primary Antibodies
Applications:	WB
Recommended Dilution:	ELISA: 1/1;000. Western blot: 1/100-1/500.
Reactivity:	Human, Mouse
Host:	Rabbit
Isotype:	Ig
Clonality:	Polyclonal
Immunogen:	KLH conjugated synthetic peptide between 329-358 amino acids from the C-terminal region of Human TSPYL4
Specificity:	This antibody detects TSPYL4 (C-term).
Formulation:	PBS State: Aff - Purified State: Liquid purified Ig fraction Preservative: Sodium Azide
Concentration:	lot specific
Purification:	Protein A Chromatography followed by peptide Affinity purification
Conjugation:	Unconjugated
Storage:	Store the antibody undiluted at 2-8°C for for six months or (in aliquots) at -20°C for longer. Avoid repeated freezing and thawing.
Stability:	Shelf life: one year from despatch.
Gene Name:	TSPY-like 4
Database Link:	Entrez Gene 72480 Mouse Entrez Gene 23270 Human Q9UJ04
Synonyms:	TSPY-like protein 4
Note:	Molecular Weight: 45126 Da



[View online »](#)

Product images:

TSPYL4 Antibody (C-term) western blot analysis in mouse heart tissue lysates (35 ug/lane). This demonstrates the TSPYL4 antibody detected the TSPYL4 protein (arrow).