

Product datasheet for **AP54385PU-N**

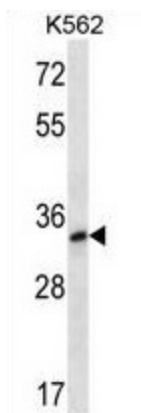
TSPY10 (C-term) Rabbit Polyclonal Antibody

Product data:

Product Type:	Primary Antibodies
Applications:	WB
Recommended Dilution:	ELISA: 1:1;000. Western blot: 1:100~500.
Reactivity:	Human
Host:	Rabbit
Isotype:	Ig
Clonality:	Polyclonal
Immunogen:	KLH conjugated synthetic peptide between 279-309 amino acids from the C-terminal region of human TSPY
Specificity:	This antibody detects TSPY1 / TSPY (C-term).
Formulation:	PBS with 0.09% (W/V) sodium azide State: Aff - Purified State: Liquid Ig fraction
Concentration:	lot specific
Purification:	Protein A column followed by peptide affinity purification
Conjugation:	Unconjugated
Storage:	Store at 2 - 8 °C for up to six months or (in aliquots) at -20 °C for longer. Avoid repeated freezing and thawing.
Stability:	Shelf life: one year from despatch.
Gene Name:	Homo sapiens testis specific protein, Y-linked 3 (TSPY3)
Database Link:	Entrez Gene 728137 Human Entrez Gene 100289087 Human Q01534
Background:	TSPY may be involved in sperm differentiation and proliferation.
Note:	Molecular Weight: 35101 Da



[View online »](#)

Product images:

LOC728395 Antibody (C-term) western blot analysis in K562 cell line lysates (35 ug/lane). This demonstrates the LOC728395 antibody detected the LOC728395 protein (arrow).