

Product datasheet for **AP54378PU-N**

TSPAN2 (N-term) Rabbit Polyclonal Antibody

Product data:

Product Type:	Primary Antibodies
Applications:	WB
Recommended Dilution:	ELISA: 1:1;000. Western blot: 1:100~500.
Reactivity:	Human
Host:	Rabbit
Isotype:	Ig
Clonality:	Polyclonal
Immunogen:	KLH conjugated synthetic peptide between 24-54 amino acids from the N-terminal region of human TSPAN2
Specificity:	This antibody detects Tetraspanin-2 (TSPAN2) (N-term).
Formulation:	PBS with 0.09% (W/V) sodium azide State: Aff - Purified State: Liquid Ig fraction
Concentration:	lot specific
Purification:	Protein A column followed by peptide affinity purification
Conjugation:	Unconjugated
Storage:	Store at 2 - 8 °C for up to six months or (in aliquots) at -20 °C for longer. Avoid repeated freezing and thawing.
Stability:	Shelf life: one year from despatch.
Gene Name:	tetraspanin 2
Database Link:	Entrez Gene 10100 Human O60636
Background:	The protein encoded by this gene is a member of the transmembrane 4 superfamily, also known as the tetraspanin family. Most of these members are cell-surface proteins that are characterized by the presence of four hydrophobic domains. The proteins mediate signal transduction events that play a role in the regulation of cell development, activation, growth and motility.



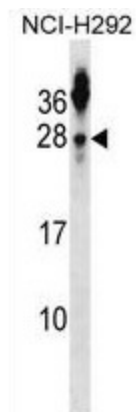
[View online »](#)

Synonyms: Tspan-2, Tetraspan NET-3

Note: **Molecular Weight:** 24148 Da

Protein Families: Transmembrane

Product images:



TSPAN2 Antibody (N-term) western blot analysis in NCI-H292 cell line lysates (35 ug/lane). This demonstrates the TSPAN2 antibody detected the TSPAN2 protein (arrow).