

Product datasheet for **AP54377PU-N**

TSPAN2 (Center) Rabbit Polyclonal Antibody

Product data:

Product Type:	Primary Antibodies
Applications:	FC, WB
Recommended Dilution:	ELISA: 1:1;000. Western blot: 1:100~500. Flow cytometry: 1:10~50.
Reactivity:	Human
Host:	Rabbit
Isotype:	Ig
Clonality:	Polyclonal
Immunogen:	KLH conjugated synthetic peptide between 116~145 amino acids from the Center region of human TSPAN2
Specificity:	This antibody detects Tetraspanin-2 (TSPAN2) (Center).
Formulation:	PBS with 0.09% (W/V) sodium azide State: Aff - Purified State: Liquid Ig fraction
Concentration:	lot specific
Purification:	Protein A column followed by peptide affinity purification
Conjugation:	Unconjugated
Storage:	Store at 2 - 8 °C for up to six months or (in aliquots) at -20 °C for longer. Avoid repeated freezing and thawing.
Stability:	Shelf life: one year from despatch.
Gene Name:	tetraspanin 2
Database Link:	Entrez Gene 10100 Human O60636
Background:	TSPAN2 is a member of the transmembrane 4 superfamily, also known as the tetraspanin family. Most of these members are cell-surface proteins that are characterized by the presence of four hydrophobic domains. The proteins mediate signal transduction events that play a role in the regulation of cell development, activation, growth and motility.



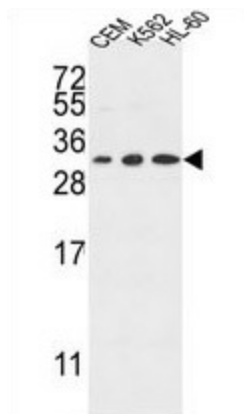
[View online »](#)

Synonyms: Tspan-2, Tetraspan NET-3

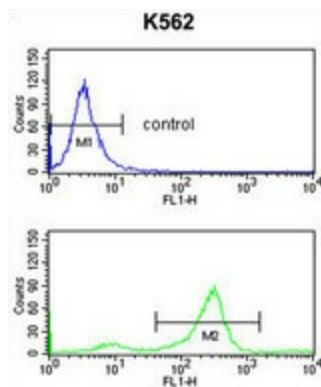
Note: **Molecular Weight:** 24148 Da

Protein Families: Transmembrane

Product images:



TSPAN2 Antibody (Center) western blot analysis in CEM, K562, HL-60 cell line lysates (35 ug/lane). This demonstrates the TSPAN2 antibody detected the TSPAN2 protein (arrow).



TSPAN2 Antibody (Center) flow cytometry analysis of K562 cells (bottom histogram) compared to a negative control cell (top histogram). FITC-conjugated goat-anti-rabbit secondary antibodies were used for the analysis.