

Product datasheet for **AP54376PU-N**

TSNARE1 (C-term) Rabbit Polyclonal Antibody

Product data:

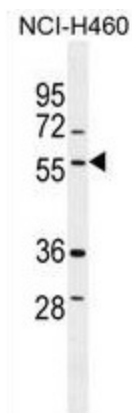
Product Type:	Primary Antibodies
Applications:	FC, IHC, WB
Recommended Dilution:	Western blot: ~1:1000. Immunohistochemistry on paraffin sections: 1:50~100. Flow cytometry: ~1:10-1:50.
Reactivity:	Human
Host:	Rabbit
Isotype:	Ig
Clonality:	Polyclonal
Immunogen:	KLH conjugated synthetic peptide between 363-391 amino acids from the C-terminal region of human TSNARE1
Specificity:	This antibody detects TSNARE1 (C-term).
Formulation:	PBS with 0.09% (W/V) sodium azide State: Aff - Purified State: Liquid Ig fraction
Concentration:	lot specific
Purification:	Protein A column followed by peptide affinity purification
Conjugation:	Unconjugated
Storage:	Store at 2 - 8 °C for up to six months or (in aliquots) at -20 °C for longer. Avoid repeated freezing and thawing.
Stability:	Shelf life: one year from despatch.
Gene Name:	t-SNARE domain containing 1
Database Link:	Entrez Gene 203062 Human Q96NA8
Synonyms:	t-SNARE domain-containing protein 1
Note:	Molecular Weight: 55949 Da
Protein Families:	Druggable Genome, Transmembrane



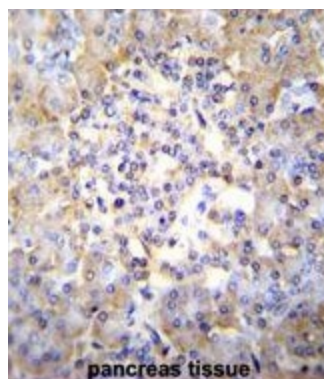
[View online »](#)

Protein Pathways: SNARE interactions in vesicular transport

Product images:



TSNARE1 Antibody (C-term) western blot analysis in NCI-H460 cell line lysates (35 ug/lane). This demonstrates the TSNARE1 antibody detected the TSNARE1 protein (arrow).



TSNARE1 Antibody (C-term) immunohistochemistry analysis in formalin fixed and paraffin embedded human pancreas tissue followed by peroxidase conjugation of the secondary antibody and DAB staining. This data demonstrates the use of TSNARE1 Antibody (C-term) for immunohistochemistry. Clinical relevance has not been evaluated.