

Product datasheet for **AP54374PU-N**

TSLP (C-term) Rabbit Polyclonal Antibody

Product data:

Product Type:	Primary Antibodies
Applications:	WB
Recommended Dilution:	ELISA: 1:1;000. Western blot: 1:100~500.
Reactivity:	Human
Host:	Rabbit
Isotype:	Ig
Clonality:	Polyclonal
Immunogen:	KLH conjugated synthetic peptide between 100-130 amino acids from the C-terminal region of human TSLP
Specificity:	This antibody detects TSLP (C-term).
Formulation:	PBS with 0.09% (W/V) sodium azide State: Aff - Purified State: Liquid Ig fraction
Concentration:	lot specific
Purification:	Protein A column followed by peptide affinity purification
Conjugation:	Unconjugated
Storage:	Store at 2 - 8 °C for up to six months or (in aliquots) at -20 °C for longer. Avoid repeated freezing and thawing.
Stability:	Shelf life: one year from despatch.
Gene Name:	thymic stromal lymphopoietin
Database Link:	Entrez Gene 85480 Human Q969D9
Background:	This gene encodes a hemopoietic cytokine proposed to signal through a heterodimeric receptor complex composed of the thymic stromal lymphopoietin receptor and the IL-7R alpha chain. It mainly impacts myeloid cells and induces the release of T cell-attracting chemokines from monocytes and enhances the maturation of CD11c(+) dendritic cells. Alternative splicing of this gene results in two transcript variants.



[View online »](#)

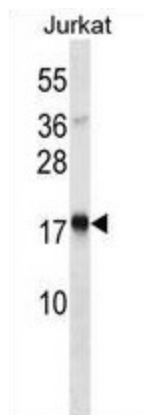
Synonyms: Thymic stromal lymphopoietin, Thymic stroma-derived lymphopoietin

Note: **Molecular Weight:** 18141 Da

Protein Families: Druggable Genome

Protein Pathways: Cytokine-cytokine receptor interaction, Jak-STAT signaling pathway

Product images:



TSLP Antibody (C-term) western blot analysis in Jurkat cell line lysates (35 ug/lane). This demonstrates the TSLP antibody detected the TSLP protein (arrow).