

Product datasheet for **AP54373PU-N**

hCG (CGA) (C-term) Rabbit Polyclonal Antibody

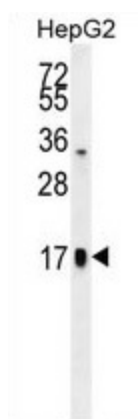
Product data:

| | |
|-----------------------|--|
| Product Type: | Primary Antibodies |
| Applications: | WB |
| Recommended Dilution: | Western blot: 1:1000. Peptide ELISA: 1:1000. |
| Reactivity: | Human |
| Host: | Rabbit |
| Isotype: | Ig |
| Clonality: | Polyclonal |
| Immunogen: | KLH conjugated synthetic peptide between 74-103 amino acids from the C-terminal region of human TSH-alpha |
| Specificity: | This antibody detects Glycoprotein hormones alpha chain (C-term). |
| Formulation: | PBS with 0.09% (W/V) sodium azide State: Aff - Purified State: Liquid Ig fraction |
| Concentration: | lot specific |
| Purification: | Protein A column followed by peptide affinity purification |
| Conjugation: | Unconjugated |
| Storage: | Store at 2 - 8 °C for up to six months or (in aliquots) at -20 °C for longer. Avoid repeated freezing and thawing. |
| Stability: | Shelf life: one year from despatch. |
| Gene Name: | glycoprotein hormones, alpha polypeptide |
| Database Link: | Entrez Gene 1081 Human P01215 |



[View online »](#)

| | |
|--------------------------|---|
| Background: | The four human glycoprotein hormones chorionic gonadotropin (CG), luteinizing hormone (LH), follicle stimulating hormone (FSH), and thyroid stimulating hormone (TSH) are dimers consisting of alpha and beta subunits that are associated noncovalently. The alpha subunits of these hormones are identical, however, their beta chains are unique and confer biological specificity. The protein encoded by this gene is the alpha subunit and belongs to the glycoprotein hormones alpha chain family. |
| Synonyms: | Follitropin alpha chain, Follicle-stimulating hormone alpha chain, FSH-alpha, Lutropin alpha chain, Luteinizing hormone alpha chain, LSH-alpha, LH alpha, Thyrotropin alpha chain, Thyroid-stimulating hormone alpha chain, TSH-alpha, Choriogonadotropin alpha chain, Chorionic gonadotrophin subunit alpha, hCG-alpha |
| Note: | Molecular Weight: 13075 Da |
| Protein Families: | Druggable Genome, ES Cell Differentiation/IPS, Secreted Protein |
| Protein Pathways: | Autoimmune thyroid disease, GnRH signaling pathway, Neuroactive ligand-receptor interaction |

Product images:

TSH-alpha Antibody (C-term) western blot analysis in HepG2 cell line lysates (35 ug/lane). This demonstrates the TSH-alpha antibody detected the TSH-alpha protein (arrow).