

Product datasheet for **AP54368PU-N**

TRUB1 (Center) Rabbit Polyclonal Antibody

Product data:

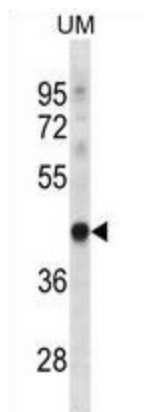
| | |
|-----------------------|--|
| Product Type: | Primary Antibodies |
| Applications: | IHC, WB |
| Recommended Dilution: | ELISA: 1:1;000. Western blot: 1:100~500. Immunohistochemistry on paraffin sections: 1:10~50. |
| Reactivity: | Human |
| Host: | Rabbit |
| Isotype: | Ig |
| Clonality: | Polyclonal |
| Immunogen: | KLH conjugated synthetic peptide between 159-188 amino acids from the Central region of human TRUB1 |
| Specificity: | This antibody detects TRUB1 (Center). |
| Formulation: | PBS with 0.09% (W/V) sodium azide State: Aff - Purified State: Liquid Ig fraction |
| Concentration: | lot specific |
| Purification: | Protein A column followed by peptide affinity purification |
| Conjugation: | Unconjugated |
| Storage: | Store at 2 - 8 °C for up to six months or (in aliquots) at -20 °C for longer. Avoid repeated freezing and thawing. |
| Stability: | Shelf life: one year from despatch. |
| Gene Name: | TruB pseudouridine synthase family member 1 |
| Database Link: | Entrez Gene 142940 Human Q8WWH5 |
| Background: | Pseudouridine is an abundant component of rRNAs and tRNAs and is enzymatically generated by isomerization of uridine by pseudouridine synthase (Zucchini et al., 2003 [PubMed 12736709]) |
| Synonyms: | PUS4 |



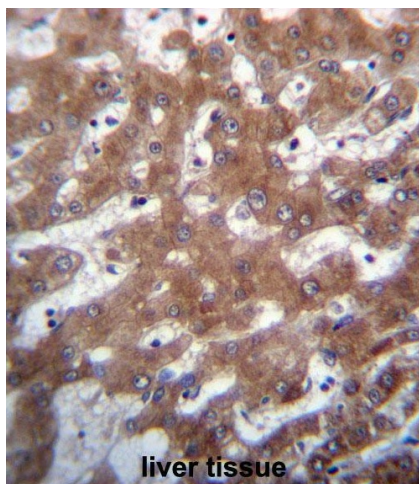
[View online »](#)

Note: **Molecular Weight:** 37253 Da

Product images:



TRUB1 Antibody (Center) western blot analysis in UM cell line lysates (35 ug/lane). This demonstrates the TRUB1 antibody detected the TRUB1 protein (arrow).



TRUB1 Antibody (Center) immunohistochemistry analysis in formalin fixed and paraffin embedded human liver tissue followed by peroxidase conjugation of the secondary antibody and DAB staining. This data demonstrates the use of TRUB1 Antibody (Center) for immunohistochemistry. Clinical relevance has not been evaluated.