

Product datasheet for **AP54366PU-N**

TRPV5 (C-term) Rabbit Polyclonal Antibody

Product data:

Product Type:	Primary Antibodies
Applications:	WB
Recommended Dilution:	ELISA: 1:1;000. Western blot: 1:100~500.
Reactivity:	Human
Host:	Rabbit
Isotype:	Ig
Clonality:	Polyclonal
Immunogen:	KLH conjugated synthetic peptide between 633-663 amino acids from the C-terminal region of human TRPV5
Specificity:	This antibody detects TRPV5 / ECAC1 (C-term).
Formulation:	PBS with 0.09% (W/V) sodium azide State: Aff - Purified State: Liquid Ig fraction
Concentration:	lot specific
Purification:	Protein A column followed by peptide affinity purification
Conjugation:	Unconjugated
Storage:	Store at 2 - 8 °C for up to six months or (in aliquots) at -20 °C for longer. Avoid repeated freezing and thawing.
Stability:	Shelf life: one year from despatch.
Gene Name:	transient receptor potential cation channel subfamily V member 5
Database Link:	Entrez Gene 56302 Human Q9NQA5
Background:	This gene is a member of the transient receptor family and the TrpV subfamily. The calcium-selective channel encoded by this gene has 6 transmembrane-spanning domains, multiple potential phosphorylation sites, an N-linked glycosylation site, and 5 ANK repeats. This protein forms homotetramers or heterotetramers and is activated by a low internal calcium level.



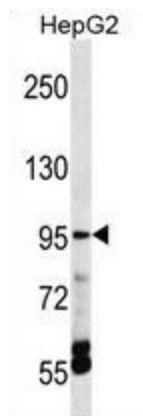
[View online »](#)

Synonyms: Osm-9-like TRP channel 3, Epithelial calcium channel 1, Calcium transport protein 2

Note: **Molecular Weight:** 82551 Da

Protein Families: Druggable Genome, Ion Channels: Transient receptor potential, Transmembrane

Product images:



TRPV5 Antibody (C-term) western blot analysis in HepG2 cell line lysates (35 ug/lane). This demonstrates the TRPV5 antibody detected the TRPV5 protein (arrow).