

Product datasheet for **AP54361PU-N**

TRP 7 (TRPC7) (C-term) Rabbit Polyclonal Antibody

Product data:

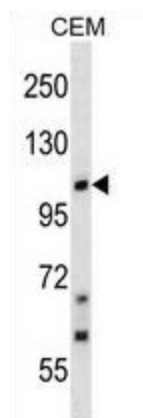
Product Type:	Primary Antibodies
Applications:	WB
Recommended Dilution:	ELISA: 1:1;000. Western blot: 1:100~500.
Reactivity:	Human
Host:	Rabbit
Isotype:	Ig
Clonality:	Polyclonal
Immunogen:	KLH conjugated synthetic peptide between 833-862 amino acids from the C-terminal region of human TRPC7
Specificity:	This antibody detects TRPC7 / TRP7 (C-term).
Formulation:	PBS with 0.09% (W/V) sodium azide State: Aff - Purified State: Liquid Ig fraction
Concentration:	lot specific
Purification:	Protein A column followed by peptide affinity purification
Conjugation:	Unconjugated
Storage:	Store at 2 - 8 °C for up to six months or (in aliquots) at -20 °C for longer. Avoid repeated freezing and thawing.
Stability:	Shelf life: one year from despatch.
Gene Name:	transient receptor potential cation channel subfamily C member 7
Database Link:	Entrez Gene 57113 Human Q9HCX4
Background:	Thought to form a receptor-activated non-selective calcium permeant cation channel. Probably is operated by a phosphatidylinositol second messenger system activated by receptor tyrosine kinases or G-protein coupled receptors. Activated by diacylglycerol (DAG) (By similarity). May also be activated by intracellular calcium store depletion.
Synonyms:	TRP-7

[View online »](#)

Note: **Molecular Weight:** 99562 Da

Protein Families: Druggable Genome, Ion Channels: Transient receptor potential, Transmembrane

Product images:



TRPC7 Antibody (C-term) western blot analysis in CEM cell line lysates (35 ug/lane). This demonstrates the TRPC7 antibody detected the TRPC7 protein (arrow).