

## Product datasheet for **AP54360PU-N**

### TRPC4 (C-term) Rabbit Polyclonal Antibody

#### Product data:

Product Type:	Primary Antibodies
Applications:	WB
Recommended Dilution:	ELISA: 1:1;000. Western blot: 1:100~500.
Reactivity:	Human
Host:	Rabbit
Isotype:	Ig
Clonality:	Polyclonal
Immunogen:	KLH conjugated synthetic peptide between 811-840 amino acids from the C-terminal region of human TRPC4
Specificity:	This antibody detects TRPC4 / TRP4 (C-term).
Formulation:	PBS with 0.09% (W/V) sodium azide State: Aff - Purified State: Liquid Ig fraction
Concentration:	lot specific
Purification:	Protein A column followed by peptide affinity purification
Conjugation:	Unconjugated
Storage:	Store at 2 - 8 °C for up to six months or (in aliquots) at -20 °C for longer. Avoid repeated freezing and thawing.
Stability:	Shelf life: one year from despatch.
Gene Name:	transient receptor potential cation channel subfamily C member 4
Database Link:	<a href="#">Entrez Gene 7223 Human Q9UBN4</a>
Background:	Form a receptor-activated non-selective calcium permeant cation channel. Acts as a cell-cell contact-dependent endothelial calcium entry channel. Probably operated by a phosphatidylinositol second messenger system activated by receptor tyrosine kinases or G-protein coupled receptors. Mediates cation entry, with an enhanced permeability to barium over calcium. May also be activated by intracellular calcium store depletion.



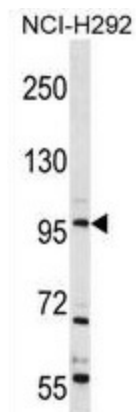
[View online »](#)

**Synonyms:** Trp-related protein 4, TRP-4, CCE1

**Note:** **Molecular Weight:** 112101 Da

**Protein Families:** Druggable Genome, Ion Channels: Transient receptor potential, Transmembrane

**Product images:**



TRPC4 Antibody (C-term) western blot analysis in NCI-H292 cell line lysates (35 ug/lane). This demonstrates the TRPC4 antibody detected the TRPC4 protein (arrow).