

## Product datasheet for **AP54359PU-N**

### TRPC1 (C-term) Rabbit Polyclonal Antibody

#### Product data:

Product Type:	Primary Antibodies
Applications:	WB
Recommended Dilution:	ELISA: 1:1;000. Western blot: 1:100~500.
Reactivity:	Human
Host:	Rabbit
Isotype:	Ig
Clonality:	Polyclonal
Immunogen:	KLH conjugated synthetic peptide between 764-793 amino acids from the C-terminal region of human TRPC1
Specificity:	This antibody detects TRPC1 / TRP1 (C-term).
Formulation:	PBS with 0.09% (W/V) sodium azide State: Aff - Purified State: Liquid Ig fraction
Concentration:	lot specific
Purification:	Protein A column followed by peptide affinity purification
Conjugation:	Unconjugated
Storage:	Store at 2 - 8 °C for up to six months or (in aliquots) at -20 °C for longer. Avoid repeated freezing and thawing.
Stability:	Shelf life: one year from despatch.
Gene Name:	transient receptor potential cation channel subfamily C member 1
Database Link:	<a href="#">Entrez Gene 7220 Human P48995</a>
Background:	TRPC1 belongs to the transient receptor potential (TRP) superfamily of cation channels. TRP cation channels are involved in diverse physiologic processes, including receptor- and store-operated Ca(2+) entry, mineral absorption, and cell death. They also function as sensors for pain, heat, cold, sound, stretch, and osmotic changes (Zhang et al., 2009 [PubMed 19193631]).
Synonyms:	Transient receptor protein 1, TRP-1



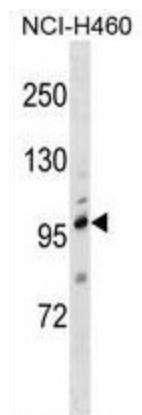
[View online »](#)

**Note:** **Molecular Weight:** 91212 Da

**Protein Families:** Druggable Genome, Ion Channels: Transient receptor potential, Transmembrane

**Protein Pathways:** Calcium signaling pathway, Huntington's disease, Parkinson's disease

**Product images:**



TRPC1 Antibody (C-term) western blot analysis in NCI-H460 cell line lysates (35 ug/lane). This demonstrates the TRPC1 antibody detected the TRPC1 protein (arrow).