

Product datasheet for **AP54354PU-N**

TRAPPC3 (N-term) Rabbit Polyclonal Antibody

Product data:

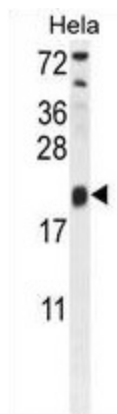
Product Type:	Primary Antibodies
Applications:	FC, WB
Recommended Dilution:	ELISA: 1:1;000. Western blot: 1:100~500. Flow cytometry: 1:10~50.
Reactivity:	Human
Host:	Rabbit
Isotype:	Ig
Clonality:	Polyclonal
Immunogen:	KLH conjugated synthetic peptide between 24-54 amino acids from the N-terminal region of human TRAPPC3
Specificity:	This antibody detects TRAPPC3 (N-term).
Formulation:	PBS with 0.09% (W/V) sodium azide State: Aff - Purified State: Liquid Ig fraction
Concentration:	lot specific
Purification:	Protein A column followed by peptide affinity purification
Conjugation:	Unconjugated
Storage:	Store at 2 - 8 °C for up to six months or (in aliquots) at -20 °C for longer. Avoid repeated freezing and thawing.
Stability:	Shelf life: one year from despatch.
Gene Name:	trafficking protein particle complex 3
Database Link:	Entrez Gene 27095 Human O43617
Background:	TRAPPC3 is a component of the TRAPP complex, which is involved in tethering of transport vesicles to the cis-Golgi membrane (Turnbull et al., 2005 [PubMed 15692564]). [supplied by OMIM].
Synonyms:	BET3 homolog



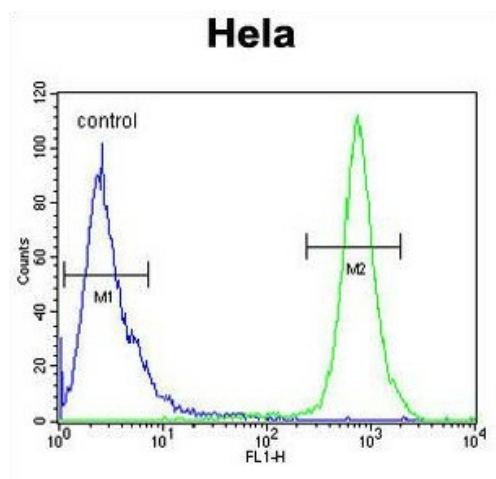
[View online »](#)

Note: **Molecular Weight:** 20274 Da

Product images:



TRAPPC3 Antibody (N-term) western blot analysis in HeLa cell line lysates (35 ug/lane). This demonstrates the TRAPPC3 antibody detected the TRAPPC3 protein (arrow).



TRAPPC3 Antibody (N-term) flow cytometric analysis of HeLa cells (right histogram) compared to a negative control cell (left histogram). FITC-conjugated goat-anti-rabbit secondary antibodies were used for the analysis.