

## Product datasheet for **AP54349PU-N**

### TRA2B (Center) Rabbit Polyclonal Antibody

#### Product data:

Product Type:	Primary Antibodies
Applications:	WB
Recommended Dilution:	WB; E. The suggested dilution is: ELISA ~ 1:1;000 Western blotting ~ 1:100~500
Reactivity:	Human
Host:	Rabbit
Isotype:	Ig
Clonality:	Polyclonal
Immunogen:	KLH conjugated synthetic peptide between 207-237 amino acids from the Central region of human TRA2B
Specificity:	This antibody detects TRA2B / SFRS10 (Center).
Formulation:	PBS with 0.09% (W/V) sodium azide State: Aff - Purified State: Liquid Ig fraction
Concentration:	lot specific
Purification:	Protein A column followed by peptide affinity purification
Conjugation:	Unconjugated
Storage:	Store at 2 - 8 °C for up to six months or (in aliquots) at -20 °C for longer. Avoid repeated freezing and thawing.
Stability:	Shelf life: one year from despatch.
Gene Name:	transformer 2 beta homolog (Drosophila)
Database Link:	<a href="#">Entrez Gene 6434 Human P62995</a>
Background:	TRA2B is a sequence-specific RNA-binding protein which participates in the control of pre-mRNA splicing.
Synonyms:	TRA-2 beta, TRA2-beta



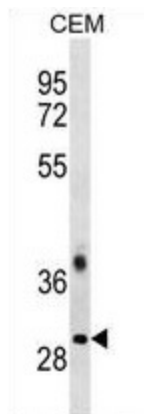
[View online »](#)

Note: **Molecular Weight:** 33666 Da

Protein Families: Druggable Genome

Protein Pathways: Spliceosome

### Product images:



TRA2B Antibody (Center) western blot analysis in CEM cell line lysates (35 ug/lane). This demonstrates the TRA2B antibody detected the TRA2B protein (arrow).