

Product datasheet for **AP54348PU-N**

TPSD1 (C-term) Rabbit Polyclonal Antibody

Product data:

Product Type:	Primary Antibodies
Applications:	IHC, WB
Recommended Dilution:	ELISA: 1:1;000. Western blot: 1:100~500. Immunohistochemistry on paraffin sections: 1:50~100.
Reactivity:	Human
Host:	Rabbit
Isotype:	Ig
Clonality:	Polyclonal
Immunogen:	KLH conjugated synthetic peptide between 171-201 amino acids from the C-terminal region of human TPSD1
Specificity:	This antibody detects TPSD1 (C-term).
Formulation:	PBS with 0.09% (W/V) sodium azide State: Aff - Purified State: Liquid Ig fraction
Concentration:	lot specific
Purification:	Protein A column followed by peptide affinity purification
Conjugation:	Unconjugated
Storage:	Store at 2 - 8 °C for up to six months or (in aliquots) at -20 °C for longer. Avoid repeated freezing and thawing.
Stability:	Shelf life: one year from despatch.
Gene Name:	tryptase delta 1
Database Link:	Entrez Gene 23430 Human Q9BZJ3



[View online »](#)

Background:

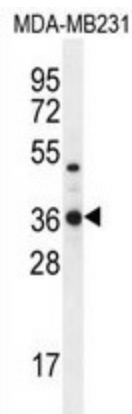
Tryptases comprise a family of trypsin-like serine proteases, the peptidase family S1. Tryptases are enzymatically active only as heparin-stabilized tetramers, and they are resistant to all known endogenous proteinase inhibitors. Several tryptase genes are clustered on chromosome 16p13.3. These genes are characterized by several distinct features. They have a highly conserved 3' UTR and contain tandem repeat sequences at the 5' flank and 3' UTR which are thought to play a role in regulation of the mRNA stability. Although this gene may be an exception, most of the tryptase genes have an intron immediately upstream of the initiator Met codon, which separates the site of transcription initiation from protein coding sequence. This feature is characteristic of tryptases but is unusual in other genes. Tryptases have been implicated as mediators in the pathogenesis of asthma and other allergic and inflammatory disorders. TPSD1 was once considered to be a pseudogene, although it is now believed to be a functional gene that encodes a protein.

Synonyms:

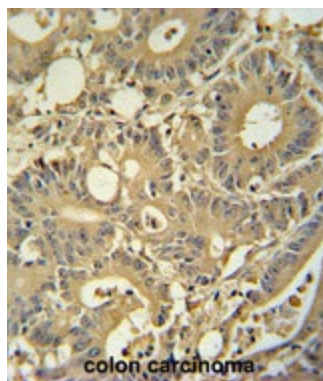
Tryptase delta

Note:**Molecular Weight:** 26584 Da**Protein Families:**

Druggable Genome, Protease, Secreted Protein

Product images:

TPSD1 Antibody (C-term) western blot analysis in MDA-MB231 cell line lysates (35 ug/lane). This demonstrates the TPSD1 antibody detected the TPSD1 protein (arrow).



TPSD1 antibody (C-term) immunohistochemistry analysis in formalin fixed and paraffin embedded human colon carcinoma followed by peroxidase conjugation of the secondary antibody and DAB staining. This data demonstrates the use of the TPSD1 antibody (C-term) for immunohistochemistry. Clinical relevance has not been evaluated.