

Product datasheet for **AP54342PU-N**

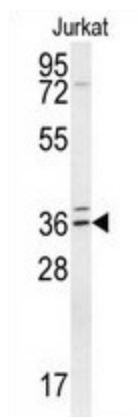
C18orf10 (TPGS2) (Center) Rabbit Polyclonal Antibody

Product data:

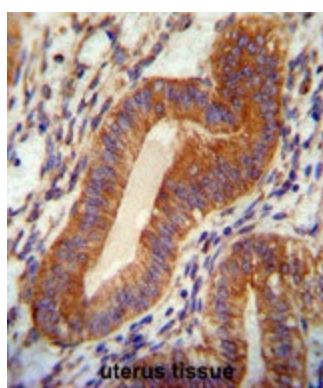
Product Type:	Primary Antibodies
Applications:	IHC, WB
Recommended Dilution:	ELISA: 1:1;000. Western blot: 1:100~500. Immunohistochemistry on paraffin sections: 1:50~100.
Reactivity:	Human
Host:	Rabbit
Isotype:	Ig
Clonality:	Polyclonal
Immunogen:	KLH conjugated synthetic peptide between 116-145 amino acids from the Central region of human TPGS2
Specificity:	This antibody detects C18orf10 (Center).
Formulation:	PBS with 0.09% (W/V) sodium azide State: Aff - Purified State: Liquid Ig fraction
Concentration:	lot specific
Purification:	Protein A column followed by peptide affinity purification
Conjugation:	Unconjugated
Storage:	Store at 2 - 8 °C for up to six months or (in aliquots) at -20 °C for longer. Avoid repeated freezing and thawing.
Stability:	Shelf life: one year from despatch.
Gene Name:	tubulin polyglutamylase complex subunit 2
Database Link:	Entrez Gene 25941 Human Q68CL5
Synonyms:	PGs2, HMFN0601, L17
Note:	Molecular Weight: 33318 Da



[View online »](#)

Product images:

TPGS2 Antibody (Center) western blot analysis in Jurkat cell line lysates (35 ug/lane). This demonstrates the TPGS2 antibody detected the TPGS2 protein (arrow).



TPGS2 antibody (Center) immunohistochemistry analysis in formalin fixed and paraffin embedded human uterus tissue followed by peroxidase conjugation of the secondary antibody and DAB staining. This data demonstrates the use of the TPGS2 antibody (Center) for immunohistochemistry. Clinical relevance has not been evaluated.