

Product datasheet for **AP54339PU-N**

p53 DINP1 (TP53INP1) (C-term) Rabbit Polyclonal Antibody

Product data:

Product Type:	Primary Antibodies
Applications:	IHC, WB
Recommended Dilution:	ELISA: 1:1;000. Western blot: 1:100~500. Immunohistochemistry on paraffin sections. 1:10~50.
Reactivity:	Human, Mouse
Host:	Rabbit
Isotype:	Ig
Clonality:	Polyclonal
Immunogen:	KLH conjugated synthetic peptide between 188-218 amino acids from the C-terminal region of human TP53INP1
Specificity:	This antibody detects TP53INP1 (C-term).
Formulation:	PBS with 0.09% (W/V) sodium azide State: Aff - Purified State: Liquid Ig fraction
Concentration:	lot specific
Purification:	Protein A column followed by peptide affinity purification
Conjugation:	Unconjugated
Storage:	Store at 2 - 8 °C for up to six months or (in aliquots) at -20 °C for longer. Avoid repeated freezing and thawing.
Stability:	Shelf life: one year from despatch.
Gene Name:	Homo sapiens tumor protein p53 inducible nuclear protein 1 (TP53INP1), transcript variant 2
Database Link:	Entrez Gene 94241 Human Q96A56
Background:	TP53INP1 is in response to double-strand DNA breaks, promotes p53/TP53 phosphorylation on 'Ser-46' and subsequent apoptosis.
Synonyms:	p53-inducible nuclear protein 1, P53DINP1, Stress-induced protein, SIP

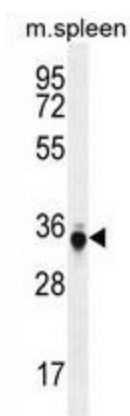


[View online »](#)

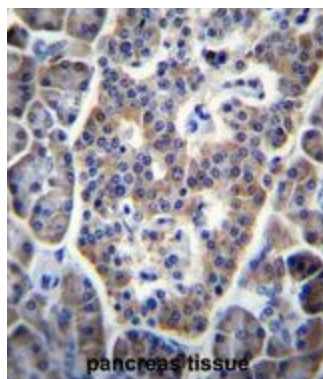
Note: **Molecular Weight:** 27366 Da

Protein Families: Druggable Genome

Product images:



TP53INP1 Antibody (C-term) western blot analysis in mouse spleen tissue lysates (35 ug/lane). This demonstrates the TP53INP1 antibody detected the TP53INP1 protein (arrow).



TP53INP1 Antibody (C-term) immunohistochemistry analysis in formalin fixed and paraffin embedded human pancreas tissue followed by peroxidase conjugation of the secondary antibody and DAB staining. This data demonstrates the use of TP53INP1 Antibody (C-term) for immunohistochemistry. Clinical relevance has not been evaluated.