

Product datasheet for **AP54338PU-N**

TP53BP2 (N-term) Rabbit Polyclonal Antibody

Product data:

Product Type:	Primary Antibodies
Applications:	WB
Recommended Dilution:	ELISA: 1:1;000. Western blot: 1:100~500.
Reactivity:	Human
Host:	Rabbit
Isotype:	Ig
Clonality:	Polyclonal
Immunogen:	KLH conjugated synthetic peptide between 92-122 amino acids from the N-terminal region of human TP53BP2
Specificity:	This antibody detects TP53BP2 (N-term).
Formulation:	PBS with 0.09% (W/V) sodium azide State: Aff - Purified State: Liquid Ig fraction
Concentration:	lot specific
Purification:	Protein A column followed by peptide affinity purification
Conjugation:	Unconjugated
Storage:	Store at 2 - 8 °C for up to six months or (in aliquots) at -20 °C for longer. Avoid repeated freezing and thawing.
Stability:	Shelf life: one year from despatch.
Gene Name:	tumor protein p53 binding protein 2
Database Link:	Entrez Gene 7159 Human Q13625

[View online »](#)

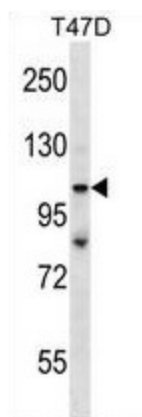
Background: TP53BP2 is a member of the ASPP (apoptosis-stimulating protein of p53) family of p53 interacting proteins. The protein contains four ankyrin repeats and an SH3 domain involved in protein-protein interactions. It is localized to the perinuclear region of the cytoplasm, and regulates apoptosis and cell growth through interactions with other regulatory molecules including members of the p53 family. Multiple transcript variants encoding different isoforms have been found for this gene.

Synonyms: p53-binding protein 2, p53BP2, 53BP2, Bcl2-binding protein, BBP, NY-REN-51, ASPP2

Note: **Molecular Weight:** 125616 Da

Protein Families: Druggable Genome

Product images:



TP53BP2 Antibody (N-term) western blot analysis in T47D cell line lysates (35 ug/lane). This demonstrates the TP53BP2 antibody detected the TP53BP2 protein (arrow).