

Product datasheet for **AP54337PU-N**

TOR2A (Center) Rabbit Polyclonal Antibody

Product data:

Product Type:	Primary Antibodies
Applications:	IHC, WB
Recommended Dilution:	ELISA: 1:1;000. Western blot: 1:100~500. Immunohistochemistry on paraffin sections: 1:10~50.
Reactivity:	Human
Host:	Rabbit
Isotype:	Ig
Clonality:	Polyclonal
Immunogen:	KLH conjugated synthetic peptide between 201-229 amino acids from the Central region of human TOR2A
Specificity:	This antibody detects Torsin-2A (TOR2A) (Center).
Formulation:	PBS with 0.09% (W/V) sodium azide State: Aff - Purified State: Liquid Ig fraction
Concentration:	lot specific
Purification:	Protein A column followed by peptide affinity purification
Conjugation:	Unconjugated
Storage:	Store at 2 - 8 °C for up to six months or (in aliquots) at -20 °C for longer. Avoid repeated freezing and thawing.
Stability:	Shelf life: one year from despatch.
Gene Name:	torsin family 2 member A
Database Link:	Entrez Gene 27433 Human Q5JU69



[View online »](#)

Background:

Salusins are multifunctional bioactive peptides discovered by bioinformatics analyses of a full-length cDNA library. Salusin alpha and salusin beta are related peptides of 28 and 20 amino acids that were recently characterized. These peptides are considered to be biosynthesized from preprosalusin, an alternative-splicing product of the torsion dystonia-related gene (TOR2A), after frameshift reading and digestion at dibasic amino acids. Salusin alpha has recently been shown to be involved in atherosclerosis; it potently suppresses acyl-CoA:cholesterol acyltransferase-1 which stores cholesterol ester converted from free cholesterol in macrophages, thereby reducing human macrophage foam cell formation.

Synonyms:

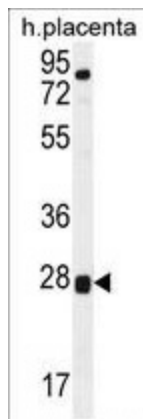
TORP1, Torsin-related protein 1

Note:

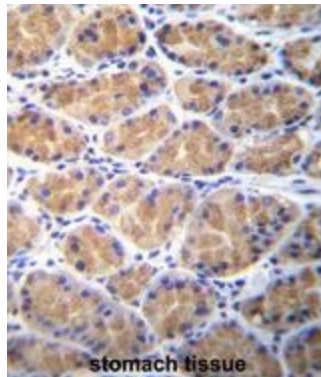
Molecular Weight: 35714 Da

Protein Families:

Secreted Protein, Transmembrane

Product images:


TOR2A Antibody (Center) western blot analysis in human placenta tissue lysates (35 ug/lane). This demonstrates the TOR2A antibody detected the TOR2A protein (arrow).



TOR2A Antibody (Center) immunohistochemistry analysis in formalin fixed and paraffin embedded human stomach tissue followed by peroxidase conjugation of the secondary antibody and DAB staining. This data demonstrates the use of TOR2A Antibody (Center) for immunohistochemistry. Clinical relevance has not been evaluated.