

Product datasheet for **AP54336PU-N**

Torsin B (TOR1B) (C-term) Rabbit Polyclonal Antibody

Product data:

Product Type:	Primary Antibodies
Applications:	IHC, WB
Recommended Dilution:	ELISA: 1:1;000. Western blot: 1:100~500. Immunohistochemistry on paraffin sections: 1:10~50.
Reactivity:	Human
Host:	Rabbit
Isotype:	Ig
Clonality:	Polyclonal
Immunogen:	KLH conjugated synthetic peptide between 214-243 amino acids from the C-terminal region of human TOR1B
Specificity:	This antibody detects Torsin-1B (TOR1B) (C-term).
Formulation:	PBS with 0.09% (W/V) sodium azide State: Aff - Purified State: Liquid Ig fraction
Concentration:	lot specific
Purification:	Protein A column followed by peptide affinity purification
Conjugation:	Unconjugated
Storage:	Store at 2 - 8 °C for up to six months or (in aliquots) at -20 °C for longer. Avoid repeated freezing and thawing.
Stability:	Shelf life: one year from despatch.
Gene Name:	torsin family 1 member B
Database Link:	Entrez Gene 27348 Human Q14657
Background:	TOR1B may serve as a molecular chaperone assisting in the proper folding of secreted and/or membrane proteins (By similarity).
Synonyms:	DQ1; MGC4386

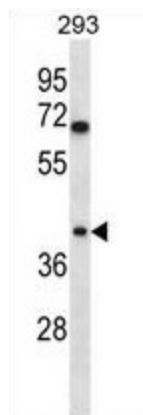


[View online »](#)

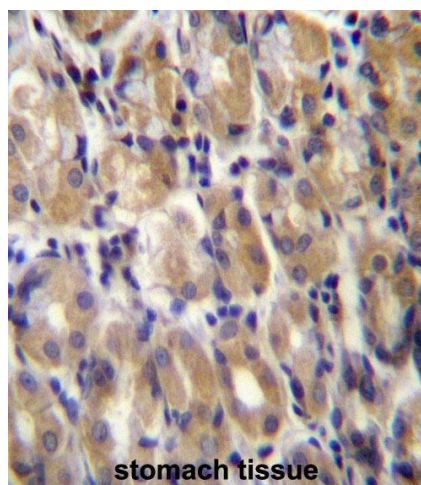
Note: **Molecular Weight:** 37979 Da

Protein Families: Transmembrane

Product images:



TOR1B Antibody (C-term) western blot analysis in 293 cell line lysates (35 ug/lane). This demonstrates the TOR1B antibody detected the TOR1B protein (arrow).



TOR1B Antibody (C-term) immunohistochemistry analysis in formalin fixed and paraffin embedded human stomach tissue followed by peroxidase conjugation of the secondary antibody and DAB staining. This data demonstrates the use of TOR1B Antibody (C-term) for immunohistochemistry. Clinical relevance has not been evaluated.