

Product datasheet for **AP54334PU-N**

TOP3B (C-term) Rabbit Polyclonal Antibody

Product data:

Product Type:	Primary Antibodies
Applications:	WB
Recommended Dilution:	Peptide ELISA: 1/1000. Western blot: 1/1000.
Reactivity:	Human, Mouse
Host:	Rabbit
Isotype:	Ig
Clonality:	Polyclonal
Immunogen:	KLH conjugated synthetic peptide between 826-854 amino acids from the C-terminal region of human TOP3B
Specificity:	This antibody detects TOP3B (C-term).
Formulation:	PBS with 0.09% (W/V) sodium azide State: Aff - Purified State: Liquid Ig fraction
Concentration:	lot specific
Purification:	Protein A column followed by peptide affinity purification
Conjugation:	Unconjugated
Storage:	Store undiluted at 2-8°C for one month or (in aliquots) at -20°C for longer. Avoid repeated freezing and thawing.
Stability:	Shelf life: one year from despatch.
Gene Name:	Homo sapiens topoisomerase (DNA) III beta (TOP3B), transcript variant 1
Database Link:	Entrez Gene 21976 Mouse Entrez Gene 8940 Human O95985



[View online »](#)

Background:

This gene encodes a DNA topoisomerase, an enzyme that controls and alters the topologic states of DNA during transcription. This enzyme catalyzes the transient breaking and rejoining of a single strand of DNA which allows the strands to pass through one another, thus relaxing the supercoils and altering the topology of DNA. The enzyme interacts with DNA helicase SGS1 and plays a role in DNA recombination, cellular aging and maintenance of genome stability. Alternative splicing of the C-terminus of this gene results in three transcript variants which have distinct tissue specificity; however, not all variants have been fully described.

Synonyms:

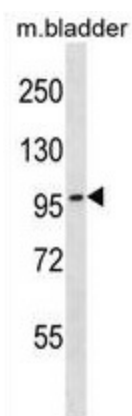
TOP3B1, DNA topoisomerase 3-beta-1, DNA topoisomerase III beta-1

Note:

Molecular Weight: 96662 Da

Protein Pathways:

Homologous recombination

Product images:

TOP3B Antibody (C-term) western blot analysis in mouse bladder tissue lysates (35 ug/lane). This demonstrates the TOP3B antibody detected the TOP3B protein (arrow).