

Product datasheet for **AP54331PU-N**

Topoisomerase II alpha (TOP2A) (C-term) Rabbit Polyclonal Antibody

Product data:

Product Type:	Primary Antibodies
Applications:	IF, IHC, WB
Recommended Dilution:	ELISA: 1:1;000. Western blot: 1:100~500. Immunohistochemistry on paraffin sections: 1:50~100. Immunofluorescence: 1:10~50.
Reactivity:	Human
Host:	Rabbit
Isotype:	Ig
Clonality:	Polyclonal
Immunogen:	KLH conjugated synthetic peptide between 1174~1204 amino acids from the C-terminal region of human TOP2A
Specificity:	This antibody detects TOP2A (C-term).
Formulation:	PBS with 0.09% (W/V) sodium azide State: Aff - Purified State: Liquid Ig fraction
Concentration:	lot specific
Purification:	Protein A column followed by peptide affinity purification
Conjugation:	Unconjugated
Storage:	Store at 2 - 8 °C for up to six months or (in aliquots) at -20 °C for longer. Avoid repeated freezing and thawing.
Stability:	Shelf life: one year from despatch.
Gene Name:	topoisomerase (DNA) II alpha
Database Link:	Entrez Gene 7153 Human P11388



[View online »](#)

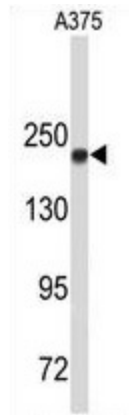
Background: TOP2A encodes a DNA topoisomerase, an enzyme that controls and alters the topologic states of DNA during transcription. This nuclear enzyme is involved in processes such as chromosome condensation, chromatid separation, and the relief of torsional stress that occurs during DNA transcription and replication. It catalyzes the transient breaking and rejoining of two strands of duplex DNA which allows the strands to pass through one another, thus altering the topology of DNA.

Synonyms: TOP2, Top-2, DNA topoisomerase 2-alpha, DNA topoisomerase II alpha isozyme

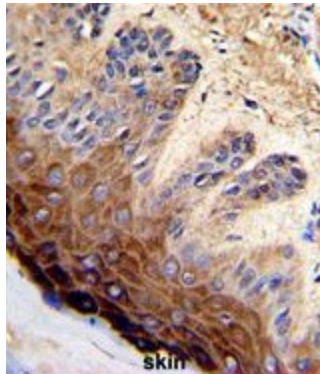
Note: **Molecular Weight:** 174385 Da

Protein Families: Druggable Genome

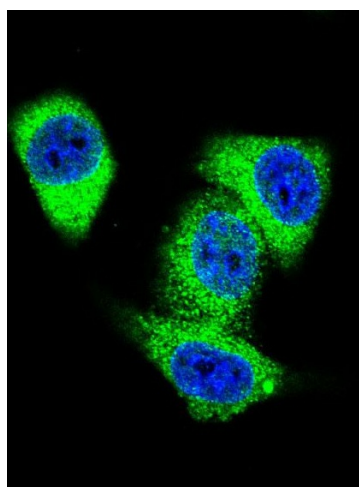
Product images:



Western blot analysis of TOP2A Antibody (C-term) in A375 cell line lysates (35 ug/lane). TOP2A (arrow) was detected using the purified Pab.



Formalin-fixed and paraffin-embedded human skin with TOP2A Antibody (C-term), which was peroxidase-conjugated to the secondary antibody, followed by DAB staining. This data demonstrates the use of this antibody for immunohistochemistry; clinical relevance has not been evaluated.



Confocal immunofluorescent analysis of TOP2A Antibody (C-term) with HeLa cell followed by Alexa Fluor 488-conjugated goat anti-rabbit IgG (green). DAPI was used to stain the cell nuclear (blue).