

## Product datasheet for **AP54328PU-N**

### TOE1 (N-term) Rabbit Polyclonal Antibody

#### Product data:

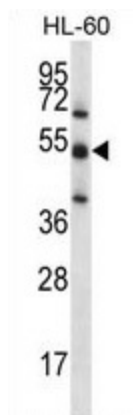
Product Type:	Primary Antibodies
Applications:	WB
Recommended Dilution:	ELISA: 1:1;000. Western blot: 1:100~500.
Reactivity:	Human
Host:	Rabbit
Isotype:	Ig
Clonality:	Polyclonal
Immunogen:	KLH conjugated synthetic peptide between 89-117 amino acids from the N-terminal region of human TOE1
Specificity:	This antibody detects TOE1 (N-term).
Formulation:	PBS with 0.09% (W/V) sodium azide State: Aff - Purified State: Liquid Ig fraction
Concentration:	lot specific
Purification:	Protein A column followed by peptide affinity purification
Conjugation:	Unconjugated
Storage:	Store at 2 - 8 °C for up to six months or (in aliquots) at -20 °C for longer. Avoid repeated freezing and thawing.
Stability:	Shelf life: one year from despatch.
Gene Name:	target of EGR1, member 1 (nuclear)
Database Link:	<a href="#">Entrez Gene 114034 Human Q96GM8</a>
Background:	TOE1 inhibits cell growth rate and cell cycle. Induces CDKN1A expression as well as TGF-beta expression. Mediates the inhibitory growth effect of EGR1.
Synonyms:	FLJ13949
Note:	<b>Molecular Weight:</b> 56548 Da



[View online »](#)

Protein Families: Stem cell - Pluripotency, Transcription Factors

### Product images:



TOE1 Antibody (N-term) western blot analysis in HL-60 cell line lysates (35 ug/lane). This demonstrates the TOE1 antibody detected the TOE1 protein (arrow).