

Product datasheet for **AP54327PU-N**

CELF3 (N-term) Rabbit Polyclonal Antibody

Product data:

Product Type:	Primary Antibodies
Applications:	WB
Recommended Dilution:	ELISA: 1:1;000. Western blot: 1:100~500.
Reactivity:	Human
Host:	Rabbit
Isotype:	Ig
Clonality:	Polyclonal
Immunogen:	KLH conjugated synthetic peptide between 2-32 amino acids from the N-terminal region of human TNRC4
Specificity:	This antibody detects TNRC4 / BRUNOL1 (N-term).
Formulation:	PBS with 0.09% (W/V) sodium azide State: Aff - Purified State: Liquid Ig fraciton
Concentration:	lot specific
Purification:	Protein A column followed by peptide affinity purification
Conjugation:	Unconjugated
Storage:	Store at 2 - 8 °C for up to six months or (in aliquots) at -20 °C for longer. Avoid repeated freezing and thawing.
Stability:	Shelf life: one year from despatch.
Gene Name:	CUGBP, Elav-like family member 3
Database Link:	Entrez Gene 11189 Human Q5SZQ8



[View online »](#)

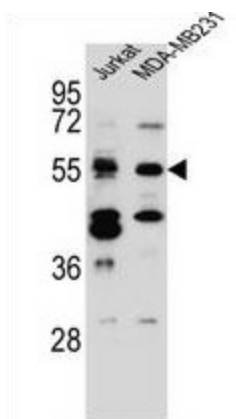
Background: Members of the CELF/BRUNOL protein family contain two N-terminal RNA recognition motif (RRM) domains, one C-terminal RRM domain, and a divergent segment of 160-230 aa between the second and third RRM domains. Members of this protein family regulate pre-mRNA alternative splicing and may also be involved in mRNA editing, and translation. Multiple alternatively spliced transcript variants encoding different isoforms have been identified in this gene.

Synonyms: BRUNOL-1, Bruno-like protein 1, CAGH4, CELF3, ERDA4

Note: **Molecular Weight:** 50548 Da

Protein Families: Transcription Factors

Product images:



TNRC4 Antibody (N-term) western blot analysis in Jurkat, MDA-MB231 cell line lysates (35 ug/lane). This demonstrates the TNRC4 antibody detected the TNRC4 protein (arrow).