

## Product datasheet for **AP54316PU-N**

### CD252 (TNFSF4) (Center) Rabbit Polyclonal Antibody

#### Product data:

Product Type:	Primary Antibodies
Applications:	FC, WB
Recommended Dilution:	ELISA: 1:1;000. Western blot: 1:100~500. Flow cytometry: 1:10~50.
Reactivity:	Human
Host:	Rabbit
Isotype:	Ig
Clonality:	Polyclonal
Immunogen:	KLH conjugated synthetic peptide between 98-126 amino acids from the Central region of human TNFSF4
Specificity:	This antibody detects CD252 / TNFSF4 (Center).
Formulation:	PBS with 0.09% (W/V) sodium azide State: Aff - Purified State: Liquid Ig fraction
Concentration:	lot specific
Purification:	Protein A column followed by peptide affinity purification
Conjugation:	Unconjugated
Storage:	Store at 2 - 8 °C for up to six months or (in aliquots) at -20 °C for longer. Avoid repeated freezing and thawing.
Stability:	Shelf life: one year from despatch.
Gene Name:	tumor necrosis factor superfamily member 4
Database Link:	<a href="#">Entrez Gene 7292 Human P23510</a>



[View online »](#)

**Background:**

The protein encoded by this gene is a cytokine that belongs to the tumor necrosis factor (TNF) ligand family. This cytokine is a ligand for receptor TNFRSF4/OX4. It is found to be involved in T cell antigen-presenting cell (APC) interactions. In surface Ig- and CD40-stimulated B cells, this cytokine along with CD70 has been shown to provide CD28-independent costimulatory signals to T cells. This protein and its receptor are reported to directly mediate adhesion of activated T cells to vascular endothelial cells.

**Synonyms:**

TXGP1, OX40 ligand, OX40L, Glycoprotein Gp34

**Note:**

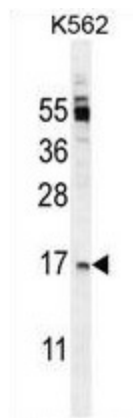
**Molecular Weight:** 21050 Da

**Protein Families:**

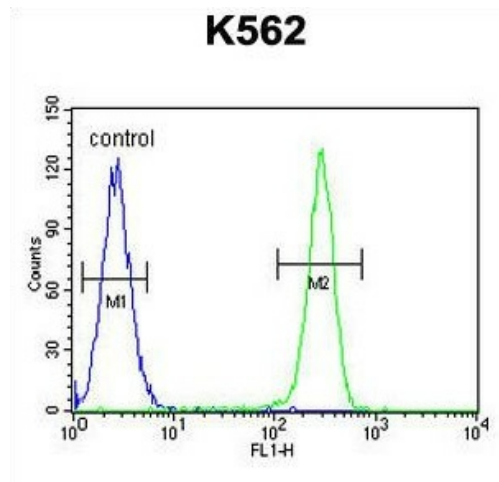
Druggable Genome, Transmembrane

**Protein Pathways:**

Cytokine-cytokine receptor interaction

**Product images:**


TNFSF4 Antibody (Center) western blot analysis in K562 cell line lysates (35 ug/lane). This demonstrates the TNFSF4 antibody detected the TNFSF4 protein (arrow).



TNFSF4 Antibody (Center) flow cytometric analysis of K562 cells (right histogram) compared to a negative control cell (left histogram). FITC-conjugated goat-anti-rabbit secondary antibodies were used for the analysis.