

Product datasheet for **AP54310PU-N**

BCMA (TNFRSF17) (Center) Rabbit Polyclonal Antibody

Product data:

Product Type:	Primary Antibodies
Applications:	WB
Recommended Dilution:	ELISA: 1:1;000. Western blot: 1:100~500.
Reactivity:	Human
Host:	Rabbit
Isotype:	Ig
Clonality:	Polyclonal
Immunogen:	KLH conjugated synthetic peptide between 62-92 amino acids from the Central region of human TNFRSF17
Specificity:	This antibody detects CD269 / BCMA (Center).
Formulation:	PBS with 0.09% (W/V) sodium azide State: Aff - Purified State: Liquid Ig fraction
Concentration:	lot specific
Purification:	Protein A column followed by peptide affinity purification
Conjugation:	Unconjugated
Storage:	Store at 2 - 8 °C for up to six months or (in aliquots) at -20 °C for longer. Avoid repeated freezing and thawing.
Stability:	Shelf life: one year from despatch.
Gene Name:	Homo sapiens TNF receptor superfamily member 17 (TNFRSF17)
Database Link:	Entrez Gene 608 Human Q02223



[View online »](#)

Background: The protein encoded by this gene is a member of the TNF-receptor superfamily. This receptor is preferentially expressed in mature B lymphocytes, and may be important for B cell development and autoimmune response. This receptor has been shown to specifically bind to the tumor necrosis factor (ligand) superfamily, member 13b (TNFSF13B/TALL-1/BAFF), and to lead to NF-kappaB and MAPK8/JNK activation. This receptor also binds to various TRAF family members, and thus may transduce signals for cell survival and proliferation.

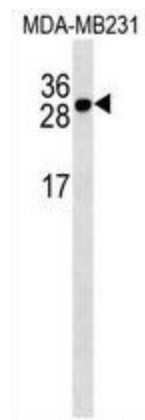
Synonyms: TNFRSF17, BCM

Note: **Molecular Weight:** 20165 Da

Protein Families: Druggable Genome, Transmembrane

Protein Pathways: Cytokine-cytokine receptor interaction

Product images:



TNFRSF17 Antibody (Center) western blot analysis in MDA-MB231 cell line lysates (35 ug/lane). This demonstrates the TNFRSF17 antibody detected the TNFRSF17 protein (arrow).