

## Product datasheet for **AP54309PU-N**

### **TNFRSF14 (Center) Rabbit Polyclonal Antibody**

#### **Product data:**

<b>Product Type:</b>	Primary Antibodies
<b>Applications:</b>	FC, IHC, WB
<b>Recommended Dilution:</b>	Peptide ELISA: 1:1;000. Western blot: 1:100~500. Immunohistochemistry on paraffin sections: 1:50~100. Flow cytometry: 1:10~50.
<b>Reactivity:</b>	Human
<b>Host:</b>	Rabbit
<b>Isotype:</b>	Ig
<b>Clonality:</b>	Polyclonal
<b>Immunogen:</b>	KLH conjugated synthetic peptide between 210~236 amino acids from the Center region of human TNFRSF14
<b>Specificity:</b>	This antibody detects TNFRSF14 / HVEM (Center).
<b>Formulation:</b>	PBS with 0.09% (W/V) sodium azide State: Aff - Purified State: Liquid Ig fraction
<b>Concentration:</b>	lot specific
<b>Purification:</b>	Protein A column followed by peptide affinity purification
<b>Conjugation:</b>	Unconjugated
<b>Storage:</b>	Store undiluted at 2-8°C for one month or (in aliquots) at -20°C for longer. Avoid repeated freezing and thawing.
<b>Stability:</b>	Shelf life: one year from despatch.
<b>Gene Name:</b>	tumor necrosis factor receptor superfamily member 14
<b>Database Link:</b>	<a href="#">Entrez Gene 8764 Human Q92956</a>



[View online »](#)

**Background:**

TNFRSF14 is a member of the TNF-receptor superfamily. This receptor was identified as a cellular mediator of herpes simplex virus (HSV) entry. Binding of HSV viral envelope glycoprotein D (gD) to this receptor protein has been shown to be part of the viral entry mechanism. The cytoplasmic region of this receptor was found to bind to several TRAF family members, which may mediate the signal transduction pathways that activate the immune response.

**Synonyms:**

HVEA, Herpesvirus entry mediator A, TR2

**Note:**

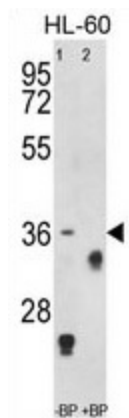
**Molecular Weight:** 30392 Da

**Protein Families:**

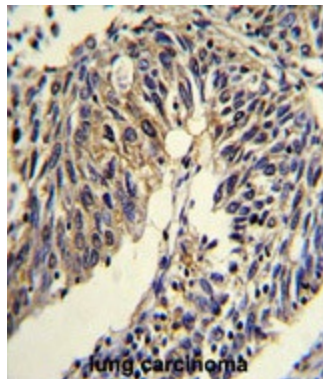
Druggable Genome, Transmembrane

**Protein Pathways:**

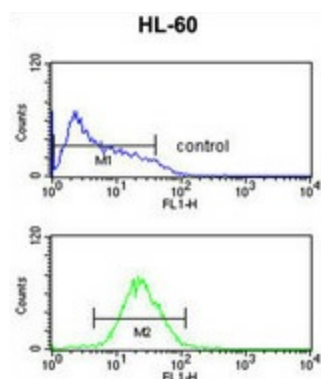
Cytokine-cytokine receptor interaction

**Product images:**

Western blot analysis of anti-TNFRSF14 Antibody (Center) Pab pre-incubated without (lane 1) and with (lane 2) blocking peptide in HL-60 cell line lysate. TNFRSF14 (arrow) was detected using the purified Pab (1:250 dilution).



Formalin-fixed and paraffin-embedded human lung carcinoma reacted with TNFRSF14 Antibody (Center), which was peroxidase-conjugated to the secondary antibody, followed by DAB staining. This data demonstrates the use of this antibody for immunohistochemistry; clinical relevance has not been evaluated.



TNFRSF14 Antibody (Center) flow cytometric analysis of HL-60 cells (bottom histogram) compared to a negative control cell (top histogram). FITC-conjugated goat-anti-rabbit secondary antibodies were used for the analysis.