

Product datasheet for **AP54308PU-N**

DcR2 (TNFRSF10D) (Center) Rabbit Polyclonal Antibody

Product data:

Product Type:	Primary Antibodies
Applications:	FC, WB
Recommended Dilution:	ELISA: 1:1;000. Western blot: 1:100~500. Flow cytometry: 1:10~50.
Reactivity:	Human
Host:	Rabbit
Isotype:	Ig
Clonality:	Polyclonal
Immunogen:	KLH conjugated synthetic peptide between 258~287 amino acids from the Central region of human TNFRSF10D
Specificity:	This antibody detects CD264 / TRAILR4 (Center).
Formulation:	PBS with 0.09% (W/V) sodium azide State: Aff - Purified State: Liquid Ig fraction
Concentration:	lot specific
Purification:	Protein A column followed by peptide affinity purification
Conjugation:	Unconjugated
Storage:	Store at 2 - 8 °C for up to six months or (in aliquots) at -20 °C for longer. Avoid repeated freezing and thawing.
Stability:	Shelf life: one year from despatch.
Gene Name:	tumor necrosis factor receptor superfamily member 10d
Database Link:	Entrez Gene 8793 Human Q9UBN6
Background:	TNFRSF is a member of the TNF-receptor superfamily. This receptor contains an extracellular TRAIL-binding domain, a transmembrane domain, and a truncated cytoplasmic death domain. This receptor does not induce apoptosis, and has been shown to play an inhibitory role in TRAIL-induced cell apoptosis.



[View online »](#)

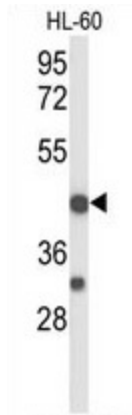
Synonyms: TNFRSF10D, DCR2, TRAIL-R4, TRUNDD, Decoy receptor 2, TRAIL receptor 4

Note: **Molecular Weight:** 41823 Da

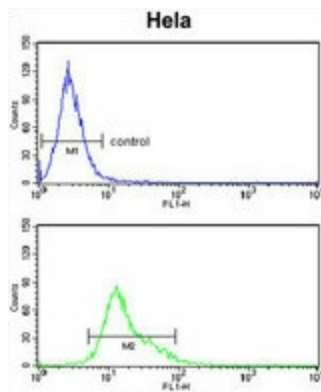
Protein Families: Druggable Genome, Transmembrane

Protein Pathways: Apoptosis, Cytokine-cytokine receptor interaction, Natural killer cell mediated cytotoxicity

Product images:



Western blot analysis of TNFRSF10D Antibody (Center) in HL-60 cell line lysates (35 ug/lane). TNFRSF10D (arrow) was detected using the purified Pab.



TNFRSF10D Antibody (Center) flow cytometry analysis of HeLa cells (bottom histogram) compared to a negative control cell (top histogram). FITC-conjugated goat-anti-rabbit secondary antibodies were used for the analysis.