

## Product datasheet for **AP54306PU-N**

### **TNFAIP8L3 (Center) Rabbit Polyclonal Antibody**

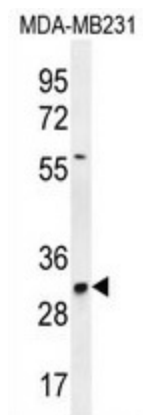
#### **Product data:**

Product Type:	Primary Antibodies
Applications:	WB
Recommended Dilution:	ELISA: 1:1;000. Western blot: 1:100~500.
Reactivity:	Human
Host:	Rabbit
Isotype:	Ig
Clonality:	Polyclonal
Immunogen:	KLH conjugated synthetic peptide between 143-172 amino acids from the Central region of human TNFAIP8L3
Specificity:	This antibody detects TNFAIP8L3 (Center).
Formulation:	PBS with 0.09% (W/V) sodium azide State: Aff - Purified State: Liquid Ig fraction
Concentration:	lot specific
Purification:	Protein A column followed by peptide affinity purification
Conjugation:	Unconjugated
Storage:	Store at 2 - 8 °C for up to six months or (in aliquots) at -20 °C for longer. Avoid repeated freezing and thawing.
Stability:	Shelf life: one year from despatch.
Gene Name:	TNF alpha induced protein 8 like 3
Database Link:	<a href="#">Entrez Gene 388121 Human Q5GJ75</a>
Synonyms:	Tumor necrosis factor alpha-induced protein 8-like protein 3
Note:	<b>Molecular Weight:</b> 32659 Da



[View online »](#)

## Product images:



TNFAIP8L3 Antibody (Center) western blot analysis in MDA-MB231 cell line lysates (35 ug/lane). This demonstrates the TNFAIP8L3 antibody detected the TNFAIP8L3 protein (arrow).