

Product datasheet for **AP54305PU-N**

Tumor necrosis factor alpha induced protein 8 like protein 2 (TNFAIP8L2) (N-term) Rabbit Polyclonal Antibody

Product data:

Product Type:	Primary Antibodies
Applications:	WB
Recommended Dilution:	ELISA: 1:1;000. Western blot: 1:100~500.
Reactivity:	Human, Mouse
Host:	Rabbit
Isotype:	Ig
Clonality:	Polyclonal
Immunogen:	KLH conjugated synthetic peptide between 36-66 amino acids from the N-terminal region of human TNFAIP8L2
Specificity:	This antibody detects TNFAIP8L2 (N-term).
Formulation:	PBS with 0.09% (W/V) sodium azide State: Aff - Purified State: Liquid Ig fraction
Concentration:	lot specific
Purification:	Protein A column followed by peptide affinity purification
Conjugation:	Unconjugated
Storage:	Store at 2 - 8 °C for up to six months or (in aliquots) at -20 °C for longer. Avoid repeated freezing and thawing.
Stability:	Shelf life: one year from despatch.
Gene Name:	TNF alpha induced protein 8 like 2
Database Link:	Entrez Gene 69769 Mouse Entrez Gene 79626 Human Q6P589
Background:	Acts as a negative regulator of innate and adaptive immunity by maintaining immune homeostasis. Negative regulator of Toll-like receptor and T-cell receptor function. Prevents hyperresponsiveness of the immune system and maintains immune homeostasis. Inhibits JUN/AP1 and NF-kappa-B activation. Promotes Fas-induced apoptosis (By similarity).

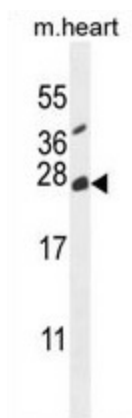


[View online »](#)

Synonyms: TNFAIP8-like protein 2, TIPE2

Note: **Molecular Weight:** 20556 Da

Product images:



TNFAIP8L2 Antibody (N-term) western blot analysis in mouse heart tissue lysates (35 ug/lane). This demonstrates the TNFAIP8L2 antibody detected the TNFAIP8L2 protein (arrow).