

## Product datasheet for **AP54303PU-N**

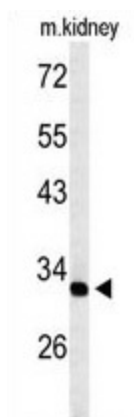
### TMUB2 (Center) Rabbit Polyclonal Antibody

#### Product data:

Product Type:	Primary Antibodies
Applications:	WB
Recommended Dilution:	ELISA: 1:1;000. Western blot: 1:100~500.
Reactivity:	Human, Mouse
Host:	Rabbit
Isotype:	Ig
Clonality:	Polyclonal
Immunogen:	KLH conjugated synthetic peptide between 90~120 amino acids from the Central region of human TMUB2
Specificity:	This antibody detects TMUB2 (Center).
Formulation:	PBS with 0.09% (W/V) sodium azide State: Aff - Purified State: Liquid Ig fraction
Concentration:	lot specific
Purification:	Protein A column followed by peptide affinity purification
Conjugation:	Unconjugated
Storage:	Store at 2 - 8 °C for up to six months or (in aliquots) at -20 °C for longer. Avoid repeated freezing and thawing.
Stability:	Shelf life: one year from despatch.
Gene Name:	transmembrane and ubiquitin like domain containing 2
Database Link:	<a href="#">Entrez Gene 79089 Human Q71RG4</a>
Synonyms:	FP2653; MGC3123
Note:	<b>Molecular Weight:</b> 33788 Da
Protein Families:	Druggable Genome, Transmembrane



[View online »](#)

**Product images:**

Western blot analysis of TMUB2 Antibody (Center) in mouse kidney tissue lysates (35 ug/lane). TMUB2 (arrow) was detected using the purified Pab.