

Product datasheet for **AP54301PU-N**

TMPRSS5 (N-term) Rabbit Polyclonal Antibody

Product data:

Product Type:	Primary Antibodies
Applications:	WB
Recommended Dilution:	Peptide ELISA: 1/1000. Western blot: 1/1000.
Reactivity:	Human
Host:	Rabbit
Isotype:	Ig
Clonality:	Polyclonal
Immunogen:	KLH conjugated synthetic peptide between 6-35 amino acids from the N-terminal region of human TMPRSS5
Specificity:	This antibody detects TMPRSS5 / Spinesin (N-term).
Formulation:	PBS State: Aff - Purified State: Liquid purified Ig fraction Preservative: 0.09% (W/V) Sodium Azide
Concentration:	lot specific
Purification:	Protein A column followed by peptide affinity purification
Conjugation:	Unconjugated
Storage:	Store undiluted at 2-8°C for one month or (in aliquots) at -20°C for longer. Avoid repeated freezing and thawing.
Stability:	Shelf life: one year from despatch.
Predicted Protein Size:	49560 Da
Gene Name:	transmembrane protease, serine 5
Database Link:	Entrez Gene 80975 Human Q9H3S3
Background:	This gene encodes a protein that belongs to the serine protease family. Serine proteases are known to be involved in many physiological and pathological processes.

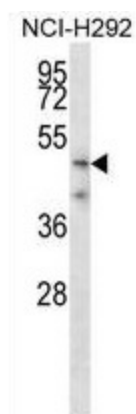


[View online »](#)

Synonyms: Transmembrane protease serine 5, MGC148044, MGC141886

Protein Families: Druggable Genome, Protease, Transmembrane

Product images:



TMPRSS5 Antibody (N-term) western blot analysis in NCI-H292 cell line lysates (35 ug/lane). This demonstrates the TMPRSS5 antibody detected the TMPRSS5 protein (arrow).