

Product datasheet for **AP54300PU-N**

TMPRSS13 (C-term) Rabbit Polyclonal Antibody

Product data:

Product Type:	Primary Antibodies
Applications:	WB
Recommended Dilution:	ELISA: 1:1;000. Western blot: 1:100~500.
Reactivity:	Human
Host:	Rabbit
Isotype:	Ig
Clonality:	Polyclonal
Immunogen:	KLH conjugated synthetic peptide between 430-460 amino acids from the C-terminal region of human TMPRSS13
Specificity:	This antibody detects TMPRSS13 (C-term).
Formulation:	PBS with 0.09% (W/V) sodium azide State: Aff - Purified State: Lliquid Ig fraction
Concentration:	lot specific
Purification:	Protein A column followed by peptide affinity purification
Conjugation:	Unconjugated
Storage:	Store at 2 - 8 °C for up to six months or (in aliquots) at -20 °C for longer. Avoid repeated freezing and thawing.
Stability:	Shelf life: one year from despatch.
Gene Name:	transmembrane protease, serine 13
Database Link:	Entrez Gene 84000 Human Q9BYE2



[View online »](#)

Background:

TMPRSS13 is a cell membrane serine protease. It is a member of a larger family of membrane attached serine proteases, a poorly defined group that includes TMPRSS11A, B, C, D, E, F, Hepsin, Corin, Matriptase 1, 2 and 3. TMPRSS13 has a domain structure of an aminoterminal cytoplasmic domain, which is much longer than the other TMPRSS family members, followed by a transmembrane domain, an SRCR domain (Scavenger receptor cysteine rich), an LDL receptor like domain, another SRCR domain, followed by the trypsin like serine protease domain. The cytoplasmic domain contains a number of tandem repeat elements, the function of which is not clear, but which may play a regulatory role.

Synonyms:

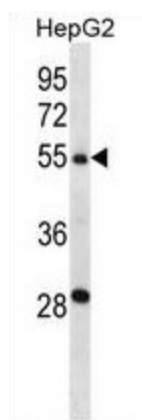
Transmembrane protease serine 13, MSP, TMPRSS11

Note:

Molecular Weight: 62699 Da

Protein Families:

Druggable Genome, Protease, Transmembrane

Product images:

TMPRSS13 Antibody (C-term) western blot analysis in HepG2 cell line lysates (35 ug/lane). This demonstrates the TMPRSS13 antibody detected the TMPRSS13 protein (arrow).