

## Product datasheet for **AP54297PU-N**

### **TMPRSS11E (Center) Rabbit Polyclonal Antibody**

#### **Product data:**

<b>Product Type:</b>	Primary Antibodies
<b>Applications:</b>	WB
<b>Recommended Dilution:</b>	ELISA: 1:1;000. Western blot: 1:100~500.
<b>Reactivity:</b>	Human
<b>Host:</b>	Rabbit
<b>Isotype:</b>	Ig
<b>Clonality:</b>	Polyclonal
<b>Immunogen:</b>	KLH conjugated synthetic peptide between 248-277 amino acids from the Central region of human TMPRSS11E
<b>Specificity:</b>	This antibody detects TMPRSS11E (Center).
<b>Formulation:</b>	PBS with 0.09% (W/V) sodium azide State: Aff - Purified State: Liquid Ig fraction
<b>Concentration:</b>	lot specific
<b>Purification:</b>	Protein A column followed by peptide affinity purification
<b>Conjugation:</b>	Unconjugated
<b>Storage:</b>	Store at 2 - 8 °C for up to six months or (in aliquots) at -20 °C for longer. Avoid repeated freezing and thawing.
<b>Stability:</b>	Shelf life: one year from despatch.
<b>Gene Name:</b>	transmembrane protease, serine 11E
<b>Database Link:</b>	<a href="#">Entrez Gene 28983 Human Q9UL52</a>
<b>Background:</b>	TMPRSS11E is serine protease which possesses both gelatinolytic and caseinolytic activities. Shows a preference for Arg in the P1 position (By similarity).
<b>Synonyms:</b>	Transmembrane protease serine 11E, DESC1, TMPRSS11E2, Serine protease DESC1, Transmembrane protease serine 11E2

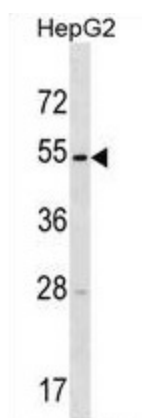


[View online »](#)

Note: **Molecular Weight:** 47696 Da

Protein Families: Druggable Genome, Protease, Secreted Protein, Transmembrane

### Product images:



TMPRSS11E Antibody (Center) western blot analysis in HepG2 cell line lysates (35 ug/lane). This demonstrates the TMPRSS11E antibody detected the TMPRSS11E protein (arrow).