

Product datasheet for **AP54295PU-N**

LAP2 (TMPO) (N-term) Rabbit Polyclonal Antibody

Product data:

Product Type:	Primary Antibodies
Applications:	WB
Recommended Dilution:	ELISA: 1:1;000. Western blot: 1:100~500.
Reactivity:	Human
Host:	Rabbit
Isotype:	Ig
Clonality:	Polyclonal
Immunogen:	KLH conjugated synthetic peptide between 165-195 amino acids from the N-terminal region of human TMPO
Specificity:	This antibody detects TMPO / LAP2 alpha (N-term).
Formulation:	PBS with 0.09% (W/V) sodium azide State: Aff - Purified State: Liquid Ig fraction
Concentration:	lot specific
Purification:	Protein A column followed by peptide affinity purification
Conjugation:	Unconjugated
Storage:	Store at 2 - 8 °C for up to six months or (in aliquots) at -20 °C for longer. Avoid repeated freezing and thawing.
Stability:	Shelf life: one year from despatch.
Gene Name:	thymopoietin
Database Link:	Entrez Gene 7112 Human P42166



[View online »](#)

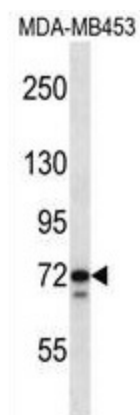
Background: The protein encoded by this gene resides in the nucleus and may play a role in the assembly of the nuclear lamina, and thus help maintain the structural organization of the nuclear envelope. It may function as a receptor for the attachment of lamin filaments to the inner nuclear membrane. Mutations in this gene are associated with dilated cardiomyopathy. Alternatively spliced transcript variants encoding different isoforms have been noted for this gene.

Synonyms: Thymopoietin isoform alpha, Thymopoietin-related peptide isoform alpha

Note: **Molecular Weight:** 75492 Da

Protein Families: Stem cell - Pluripotency, Transmembrane

Product images:



TMPO Antibody (N-term) western blot analysis in MDA-MB453 cell line lysates (35 ug/lane). This demonstrates the TMPO antibody detected the TMPO protein (arrow).