

Product datasheet for **AP54294PU-N**

Tropomodulin 1 (TMOD1) (Center) Rabbit Polyclonal Antibody

Product data:

Product Type:	Primary Antibodies
Applications:	WB
Recommended Dilution:	ELISA: 1:1;000. Western blot: 1:100~500.
Reactivity:	Human
Host:	Rabbit
Isotype:	Ig
Clonality:	Polyclonal
Immunogen:	KLH conjugated synthetic peptide between 169-198 amino acids from the Central region of human TMOD1
Specificity:	This antibody detects Tropomodulin-1 (TMOD1) (Center).
Formulation:	PBS with 0.09% (W/V) sodium azide State: Aff - Purified State: Liquid Ig fraction
Concentration:	lot specific
Purification:	Protein A column followed by peptide affinity purification
Conjugation:	Unconjugated
Storage:	Store at 2 - 8 °C for up to six months or (in aliquots) at -20 °C for longer. Avoid repeated freezing and thawing.
Stability:	Shelf life: one year from despatch.
Gene Name:	tropomodulin 1
Database Link:	Entrez Gene 7111 Human P28289
Background:	TMOD1 is a member of the tropomodulin family. The encoded protein is an actin-capping protein that regulates tropomyosin by binding to its N-terminus, inhibiting depolymerization and elongation of the pointed end of actin filaments and thereby influencing the structure of the erythrocyte membrane skeleton. Multiple transcript variants encoding the same protein have been found for this gene.

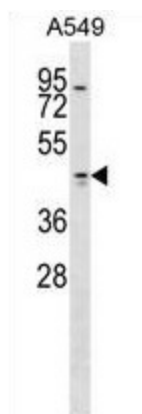


[View online »](#)

Synonyms: TMOD, Erythrocyte tropomodulin, E-Tmod, D9S57E

Note: **Molecular Weight:** 40569 Da

Product images:



TMOD1 Antibody (Center) western blot analysis in A549 cell line lysates (35 ug/lane). This demonstrates the TMOD1 antibody detected the TMOD1 protein (arrow).