

## Product datasheet for **AP54291PU-N**

### **TMEM18 (Center) Rabbit Polyclonal Antibody**

#### **Product data:**

<b>Product Type:</b>	Primary Antibodies
<b>Applications:</b>	IHC, WB
<b>Recommended Dilution:</b>	ELISA: 1:1000. Western blot: 1:1000. Immunohistochemistry on paraffin sections: 1:10~50.
<b>Reactivity:</b>	Human, Mouse
<b>Host:</b>	Rabbit
<b>Isotype:</b>	Ig
<b>Clonality:</b>	Polyclonal
<b>Immunogen:</b>	KLH conjugated synthetic peptide between 63-90 amino acids from the Central region of human TMM18
<b>Specificity:</b>	This antibody detects TMM18 (Center).
<b>Formulation:</b>	PBS with 0.09% (W/V) sodium azide State: Aff - Purified State: Liquid Ig fraction
<b>Concentration:</b>	lot specific
<b>Purification:</b>	Protein A column followed by peptide affinity purification
<b>Conjugation:</b>	Unconjugated
<b>Storage:</b>	Store at 2 - 8 °C for up to six months or (in aliquots) at -20 °C for longer. Avoid repeated freezing and thawing.
<b>Stability:</b>	Shelf life: one year from despatch.
<b>Gene Name:</b>	transmembrane protein 18
<b>Database Link:</b>	<a href="#">Entrez Gene 211986 Mouse</a> <a href="#">Entrez Gene 129787 Human</a> <a href="#">Q96B42</a>
<b>Background:</b>	TMM18 is a cell migration modulator which enhances the glioma-specific migration ability of neural stem cells (NSC) and neural precursor cells (NPC).
<b>Synonyms:</b>	DKFZp434C1714

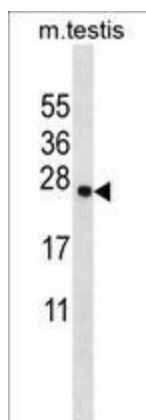


[View online »](#)

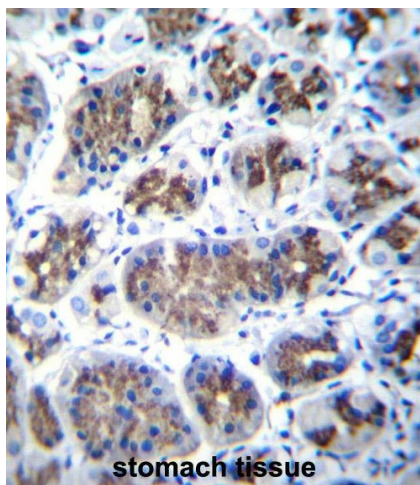
Note: **Molecular Weight:** 16265 Da

Protein Families: Transmembrane

### Product images:



TMM18 Antibody (Center) western blot analysis in mouse testis tissue lysates (35 ug/lane). This demonstrates the TMM18 antibody detected the TMM18 protein (arrow).



TMM18 Antibody (Center) immunohistochemistry analysis in formalin fixed and paraffin embedded human stomach tissue followed by peroxidase conjugation of the secondary antibody and DAB staining. This data demonstrates the use of TMM18 Antibody (Center) for immunohistochemistry. Clinical relevance has not been evaluated.