

Product datasheet for **AP54290PU-N**

TMLHE (N-term) Rabbit Polyclonal Antibody

Product data:

Product Type:	Primary Antibodies
Applications:	WB
Recommended Dilution:	ELISA: 1:1;000. Western blot: 1:100~500.
Reactivity:	Human
Host:	Rabbit
Isotype:	Ig
Clonality:	Polyclonal
Immunogen:	KLH conjugated synthetic peptide between 123-153 amino acids from the N-terminal region of human TMLHE
Specificity:	This antibody detects TMLHE / TMLD (N-term).
Formulation:	PBS with 0.09% (W/V) sodium azide State: Aff - Purified State: Liquid Ig fraction
Concentration:	lot specific
Purification:	Protein A column followed by peptide affinity purification
Conjugation:	Unconjugated
Storage:	Store at 2 - 8 °C for up to six months or (in aliquots) at -20 °C for longer. Avoid repeated freezing and thawing.
Stability:	Shelf life: one year from despatch.
Gene Name:	trimethyllysine hydroxylase, epsilon
Database Link:	Entrez Gene 55217 Human Q9NVH6
Background:	This gene encodes the protein trimethyllysine dioxygenase which is the first enzyme in the carnitine biosynthesis pathway. Carnitine play an essential role in the transport of activated fatty acids across the inner mitochondrial membrane. The encoded protein converts trimethyllysine into hydroxytrimethyllysine. A pseudogene of this gene is found on chromosome X. Alternate splicing results in multiple transcript variants.



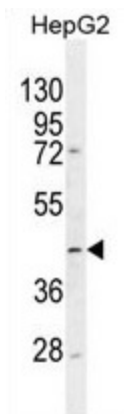
[View online »](#)

Synonyms: TMLH, TML hydroxylase, TML dioxygenase

Note: **Molecular Weight:** 49518 Da

Protein Pathways: Lysine degradation

Product images:



TMLHE Antibody (N-term) western blot analysis in HepG2 cell line lysates (35 ug/lane). This demonstrates the TMLHE antibody detected the TMLHE protein (arrow).