

Product datasheet for **AP54288PU-N**

TMIE (Center) Rabbit Polyclonal Antibody

Product data:

Product Type:	Primary Antibodies
Applications:	WB
Recommended Dilution:	ELISA: 1:1;000. Western blot: 1:100~500.
Reactivity:	Human
Host:	Rabbit
Isotype:	Ig
Clonality:	Polyclonal
Immunogen:	KLH conjugated synthetic peptide between 78~108 amino acids from the Central region of human TMIE
Specificity:	This antibody detects TMIE (Center).
Formulation:	PBS with 0.09% (W/V) sodium azide State: Aff - Purified State: Liquid Ig fraction
Concentration:	lot specific
Purification:	Protein A column followed by peptide affinity purification
Conjugation:	Unconjugated
Storage:	Store at 2 - 8 °C for up to six months or (in aliquots) at -20 °C for longer. Avoid repeated freezing and thawing.
Stability:	Shelf life: one year from despatch.
Gene Name:	transmembrane inner ear
Database Link:	Entrez Gene 259236 Human Q8NEW7



[View online »](#)

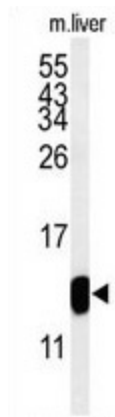
Background: This gene encodes a transmembrane inner ear protein. Studies in mouse suggest that this gene is required for normal postnatal maturation of sensory hair cells in the cochlea, including correct development of stereocilia bundles. This gene is one of multiple genes responsible for recessive non-syndromic deafness (DFNB), also known as autosomal recessive nonsyndromic hearing loss (ARNSHL), the most common form of congenitally acquired inherited hearing impairment.

Synonyms: Transmembrane inner ear expressed protein

Note: **Molecular Weight:** 17241 Da

Protein Families: Transmembrane

Product images:



Western blot analysis of TMIE Antibody (Center) in mouse liver tissue lysates (35 ug/lane). TMIE (arrow) was detected using the purified Pab.