

Product datasheet for **AP54285PU-N**

TMED6 (Center) Rabbit Polyclonal Antibody

Product data:

Product Type:	Primary Antibodies
Applications:	WB
Recommended Dilution:	ELISA: 1:1;000. Western blot: 1:100~500.
Reactivity:	Human
Host:	Rabbit
Isotype:	Ig
Clonality:	Polyclonal
Immunogen:	KLH conjugated synthetic peptide between 124-153 amino acids from the Central region of human TMED6
Specificity:	This antibody detects TMED6 (Center).
Formulation:	PBS with 0.09% (W/V) sodium azide State: Aff - Purified State: Liquid Ig fraction
Concentration:	lot specific
Purification:	Protein A column followed by peptide affinity purification
Conjugation:	Unconjugated
Storage:	Store at 2 - 8 °C for up to six months or (in aliquots) at -20 °C for longer. Avoid repeated freezing and thawing.
Stability:	Shelf life: one year from despatch.
Gene Name:	Homo sapiens transmembrane p24 trafficking protein 6 (TMED6)
Database Link:	Entrez Gene 146456 Human Q8WW62



[View online »](#)

Background:

TMED6 (transmembrane emp24 domain-containing protein 6) is a 240 amino acid single-pass type I membrane protein that belongs to the EMP24/GP25L family and contains one GOLD domain. The gene that encodes TMED6 contains around 8,564 bases and maps to human chromosome 16q22.1. Encoding over 900 genes and consisting of approximately 90 million base pairs, chromosome 16 makes up nearly 3% of the human genome and is associated with a variety of genetic disorders. The GAN gene is located on chromosome 16 and, when mutated, may lead to giant axonal neuropathy, a nervous system disorder characterized by increasing malfunction with growth. Alterations in the CREB gene and NOD2 gene, both of which are located on chromosome 16, result in Rubinstein-Taybi syndrome and Crohn's disease, respectively. An association with systemic lupus erythematosus and a number of other autoimmune disorders with the pericentromeric region of chromosome 16 has led to the identification of SLC5A11 as a potential autoimmune modifier.

Synonyms:

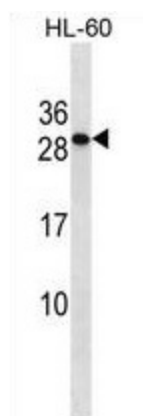
UNQ9146/PRO34237

Note:

Molecular Weight: 27631 Da

Protein Families:

Transmembrane

Product images:


TMED6 Antibody (Center) western blot analysis in HL-60 cell line lysates (35 ug/lane). This demonstrates the TMED6 antibody detected the TMED6 protein (arrow).