

## Product datasheet for **AP54280PU-N**

### TM6SF1 (N-term) Rabbit Polyclonal Antibody

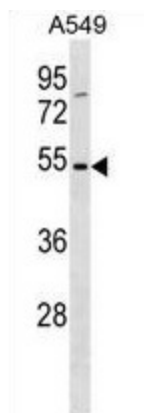
#### Product data:

Product Type:	Primary Antibodies
Applications:	WB
Recommended Dilution:	ELISA: 1:1;000. Western blot: 1:100~500.
Reactivity:	Human
Host:	Rabbit
Isotype:	Ig
Clonality:	Polyclonal
Immunogen:	KLH conjugated synthetic peptide between 39-68 amino acids from the N-terminal region of human TM6SF1
Specificity:	This antibody detects TM6SF1 (N-term).
Formulation:	PBS with 0.09% (W/V) sodium azide State: Aff - Purified State: Liquid Ig fraction
Concentration:	lot specific
Purification:	Protein A column followed by peptide affinity purification
Conjugation:	Unconjugated
Storage:	Store at 2 - 8 °C for up to six months or (in aliquots) at -20 °C for longer. Avoid repeated freezing and thawing.
Stability:	Shelf life: one year from despatch.
Gene Name:	transmembrane 6 superfamily member 1
Database Link:	<a href="#">Entrez Gene 53346 Human Q9BZW5</a>
Synonyms:	Transmembrane 6 superfamily member 1
Note:	<b>Molecular Weight:</b> 41636 Da
Protein Families:	Transmembrane



[View online »](#)

## Product images:



TM6SF1 Antibody (N-term) western blot analysis in A549 cell line lysates (35 ug/lane). This demonstrates the TM6SF1 antibody detected the TM6SF1 protein (arrow).