

Product datasheet for **AP54277PU-N**

TMEM181 (N-term) Rabbit Polyclonal Antibody

Product data:

Product Type:	Primary Antibodies
Applications:	IHC, WB
Recommended Dilution:	ELISA: 1:1;000, Western blot: 1:100~500. Immunohistochemistry on paraffin sections: 1:10~50.
Reactivity:	Human
Host:	Rabbit
Isotype:	Ig
Clonality:	Polyclonal
Immunogen:	KLH conjugated synthetic peptide between 119-148 amino acids from the N-terminal region of human TM181
Specificity:	This antibody detects TM181 (N-term).
Formulation:	PBS with 0.09% (W/V) sodium azide State: Aff - Purified State: Liquid Ig fraction
Concentration:	lot specific
Purification:	Protein A column followed by peptide affinity purification
Conjugation:	Unconjugated
Storage:	Store at 2 - 8 °C for up to six months or (in aliquots) at -20 °C for longer. Avoid repeated freezing and thawing.
Stability:	Shelf life: one year from despatch.
Gene Name:	transmembrane protein 181
Database Link:	Entrez Gene 57583 Human Q9P2C4
Background:	The TMEM181 gene encodes a putative G protein-coupled receptor expressed on the cell surface (Carette et al., 2009 [PubMed 19965467]; Wollscheid et al., 2009 [PubMed 19349973]).
Synonyms:	TMEM181, Transmembrane protein 181, GPR178, KIAA1423

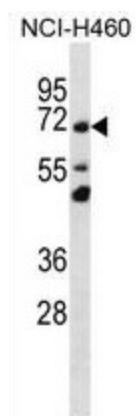


[View online »](#)

Note: **Molecular Weight:** 69325 Da

Protein Families: Transmembrane

Product images:



TM181 Antibody (N-term) western blot analysis in NCI-H460 cell line lysates (35 ug/lane). This demonstrates the TM181 antibody detected the TM181 protein (arrow).